

November 19, 2014

(4) the setting of a price for the sale or lease of real property owned by the Board pursuant

November 19, 2014

President Vitale thereupon proceeded with Agenda Items

November 19, 2014

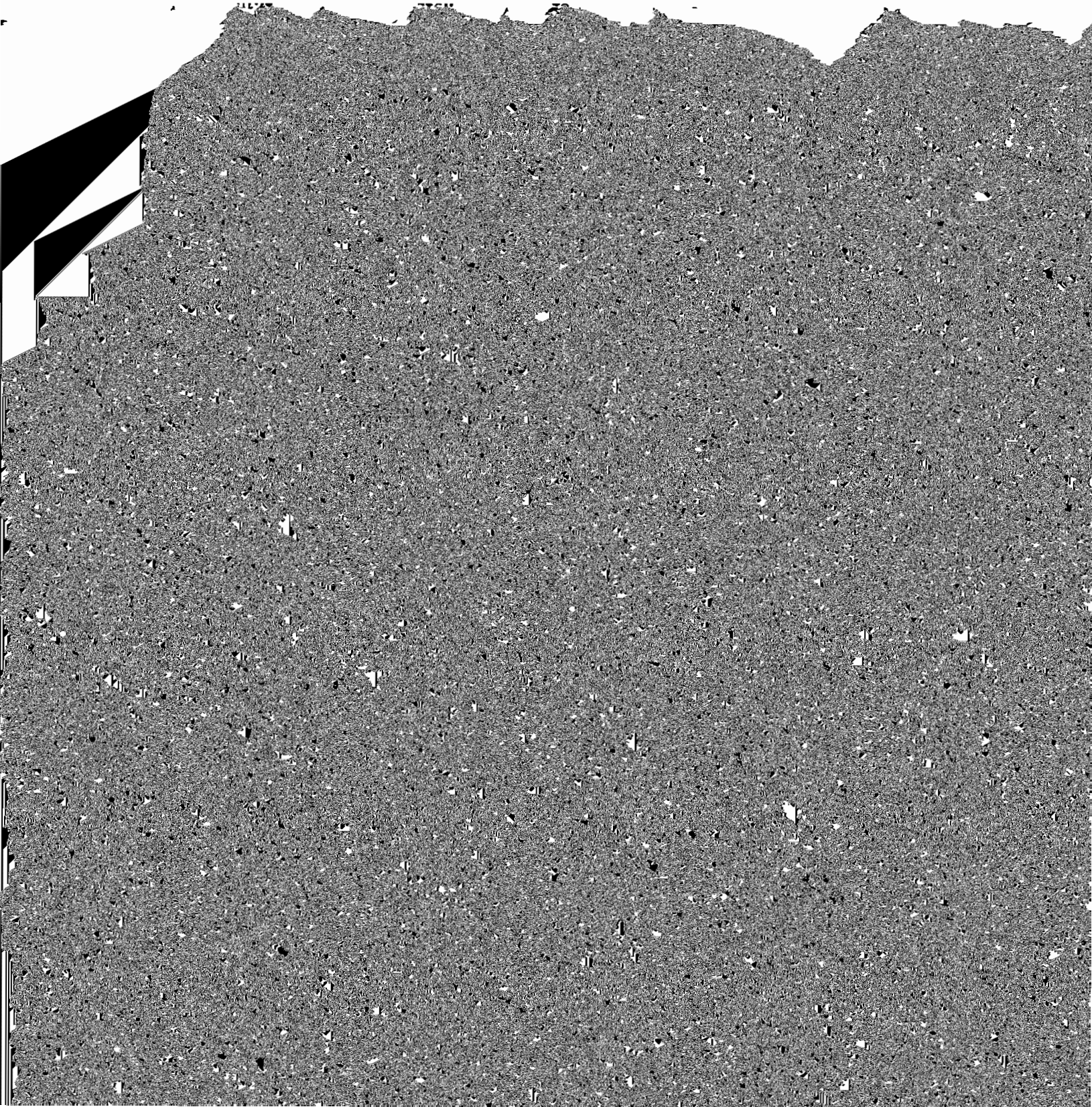
14-1119-AR5

APPOINT ASSISTANT GENERAL COUNSEL
DEPARTMENT OF LAW
(RACHEL M. GARCIA)

THE GENERAL COUNSEL REPORTS THE FOLLOWING RECOMMENDATION:

Appoint the following named individual to the position listed below effective November 10, 2014.

DESCRIPTION:

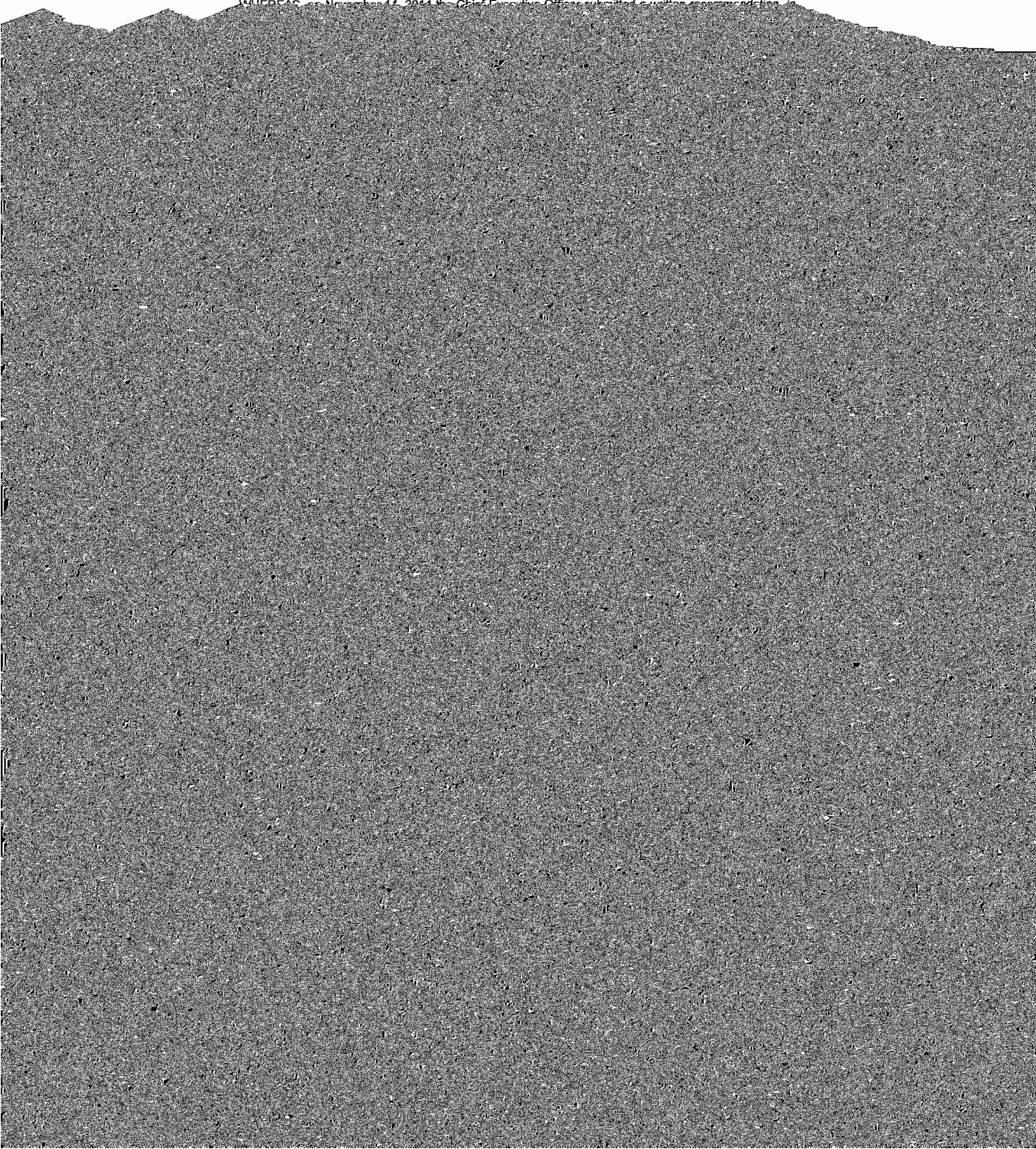


November 19, 2014

14-1119-RS5

**RESOLUTION APPROVING CHIEF EXECUTIVE OFFICER'S RECOMMENDATION
TO DISMISS EDUCATIONAL SUPPORT PERSONNEL**

WHEREAS, on November 14, 2014, the Chief Executive Officer submitted a written recommendation to

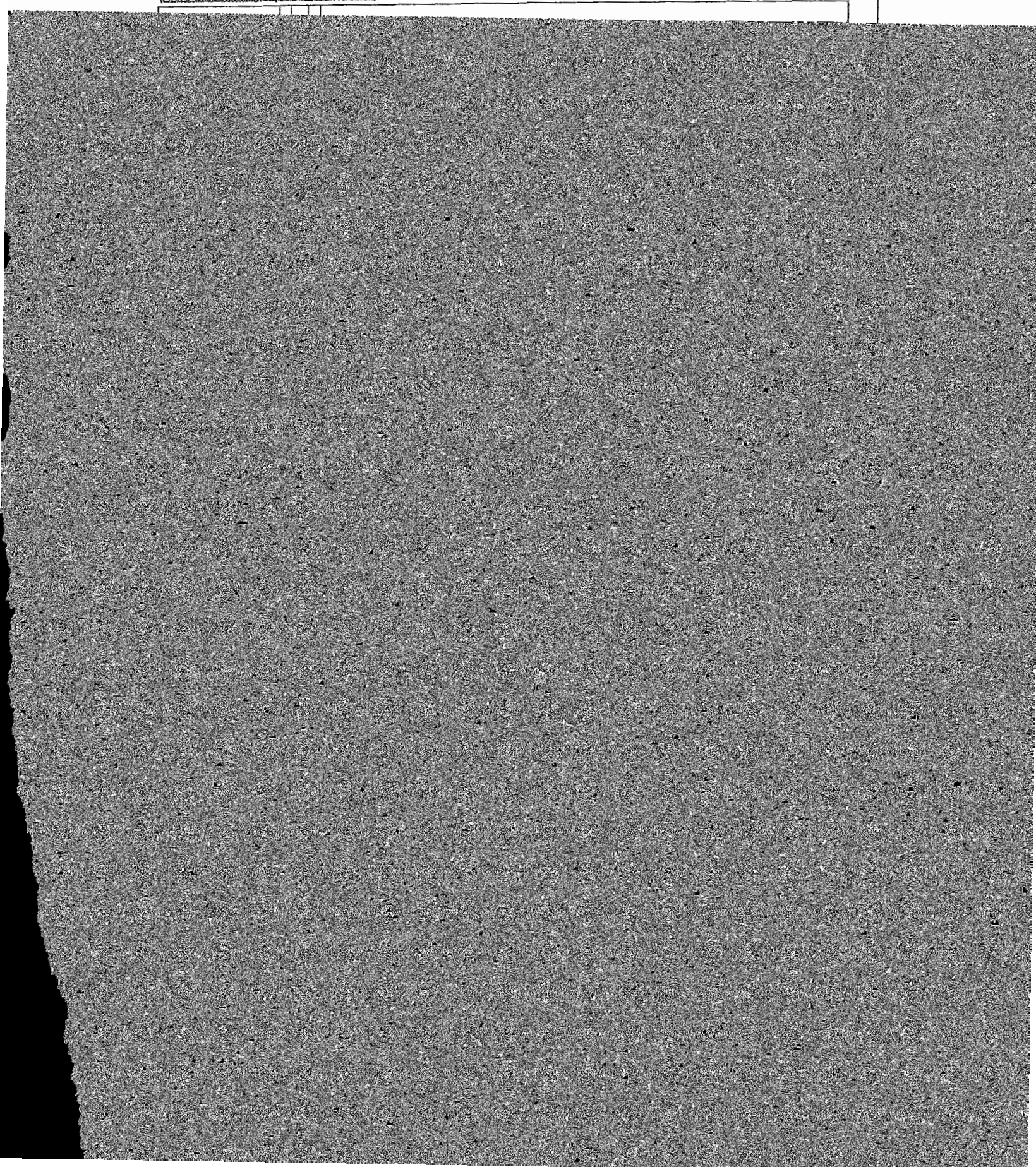


November 19, 2014

SUB-LICENSEE: DePaul University
1 East Jackson Blvd.
Chicago, IL 60604
Contact Person: Jean Lenti-Ponsetto, Athletic Director
Phone: 773-325-7504

November 19, 2014

EXHIBIT A



November 19, 2014

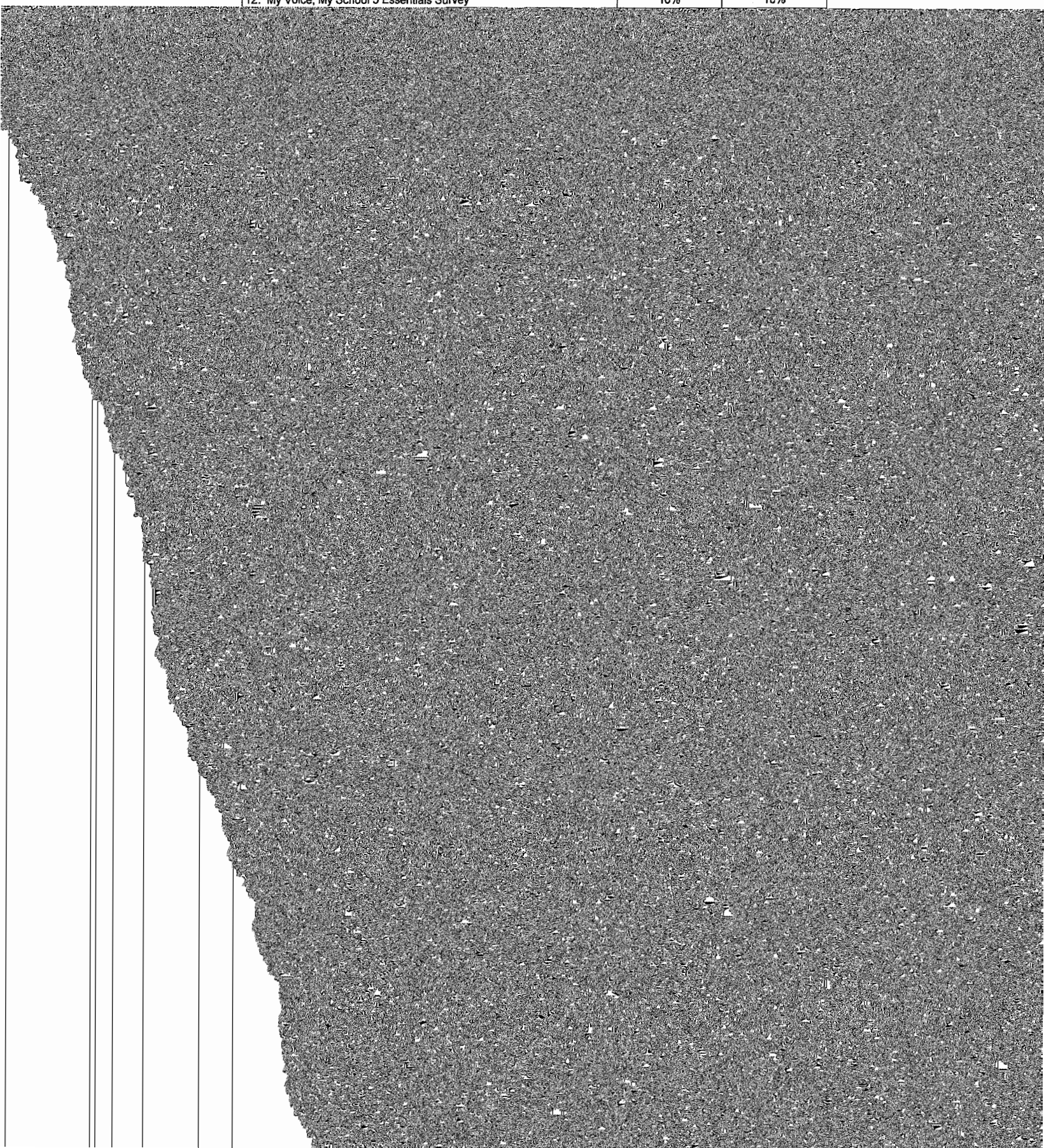
3. A school with a School Quality Rating of Level 2 Tier 4 hereunder shall receive Remediation

November 19, 2014

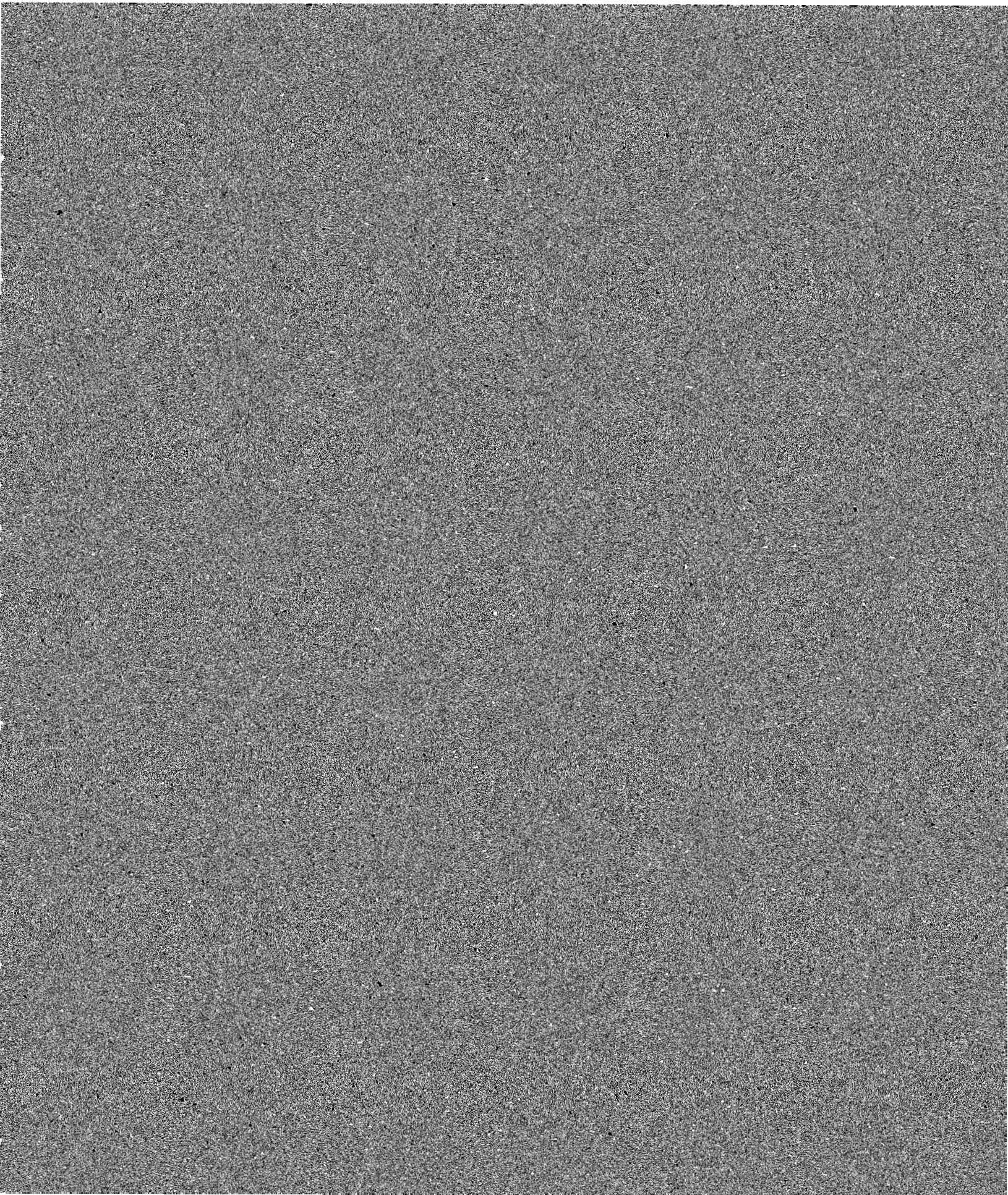
Participation Rate	Point Adjustment
Greater than or equal to 95%	No adjustment

November 19, 2014

9. National School Attainment Percentile on the NWEA Math Assessment for Grade 2	2.5%	5%
10. Percentage of Students Making Sufficient Annual Progress on the ACCESS Assessment	5%	5%
11. Average Daily Attendance Rate (Grades K-8)	20%	35%
12. My Voice, My School 5 Essentials Survey	10%	10%



November 19, 2014



November 19, 2014

SCHOOL OPERATOR: Chicago Education Partnership, Inc.
415 N. Laramie Avenue
Chicago, Illinois, 60644
Phone: 630-200-6747
Contact: Michael Rogers, Executive Director

CHARTER SCHOOL: Chicago Education Partnership, Inc. Chicago Education Partnership, Inc.

November 19, 2014

14-1119-PR1

AUTHORIZE A NEW AGREEMENT WITH THE UNIVERSITY OF WISCONSIN-MADISON, WISCONSIN
CENTER FOR EDUCATION RESEARCH FOR CONSULTING SERVICES

THE CHIEF EXECUTIVE OFFICER REPORTS THE FOLLOWING DECISION:



Oracle Board Rpt Number
PO Number

on Code
2680945
Covered Conditions \$5,031.24

Project Total \$32,240.49

on Code
2656792 12-1024-PR8
Covered Conditions \$18,665.52

Project Total \$18,665.52

on Code
2628316 11-0525-PR8
\$15,456.00

Project Total \$15,456.00

on Code
2747383
Covered Conditions \$23,771.00
Covered Conditions \$87,278.00
Project Total \$111,049.00

014

18



ber



7.87

1.82

0.76

3.64

0.09

3.00

3.00

0.75

1.05

1.80

GE_09

November 19, 2014

Number

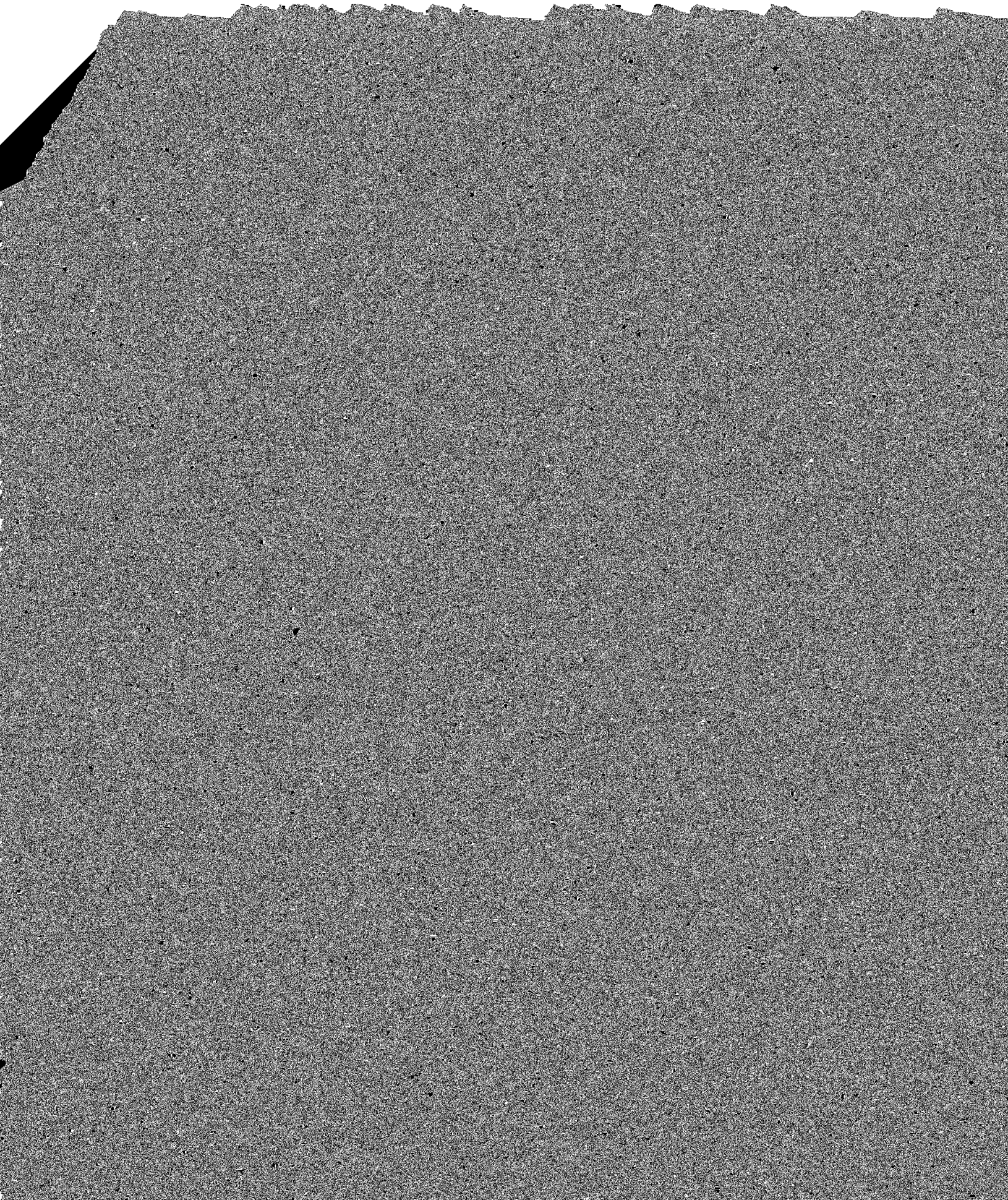
41.00
73.00
91.00
44.00
40.00
89.00
36.00
97.00
91.00
02.00

42.67
42.67

48.12
94.39
38.10
19.30
79.52
79.43

LNGE_09

November 19, 2014



November 19, 2014

Conflicts - The agreement shall not be legally binding on the Board if entered into in violation of the provisions of 105 ILCS 5/34-21.3 which restricts the employment of, or the letting of contracts to, former Board members during the one year period following expiration or other termination of their terms of office.

Indebtedness - The Board's Indebtedness Policy adopted June 26, 1996 (96-0626-PO3), as amended from time to time, shall be incorporated into and made a part of the agreement.

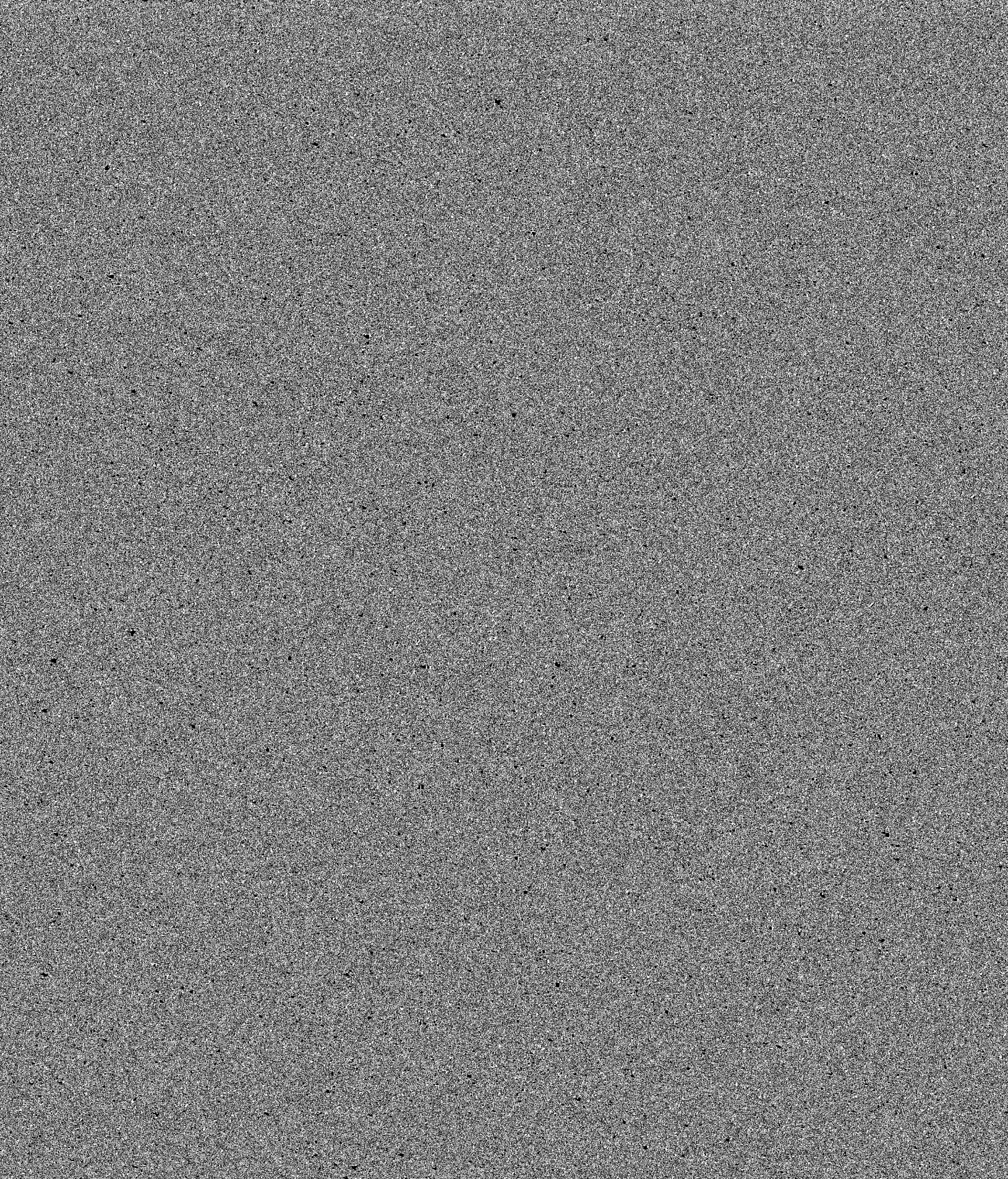
November 19, 2014

OUTCOMES:

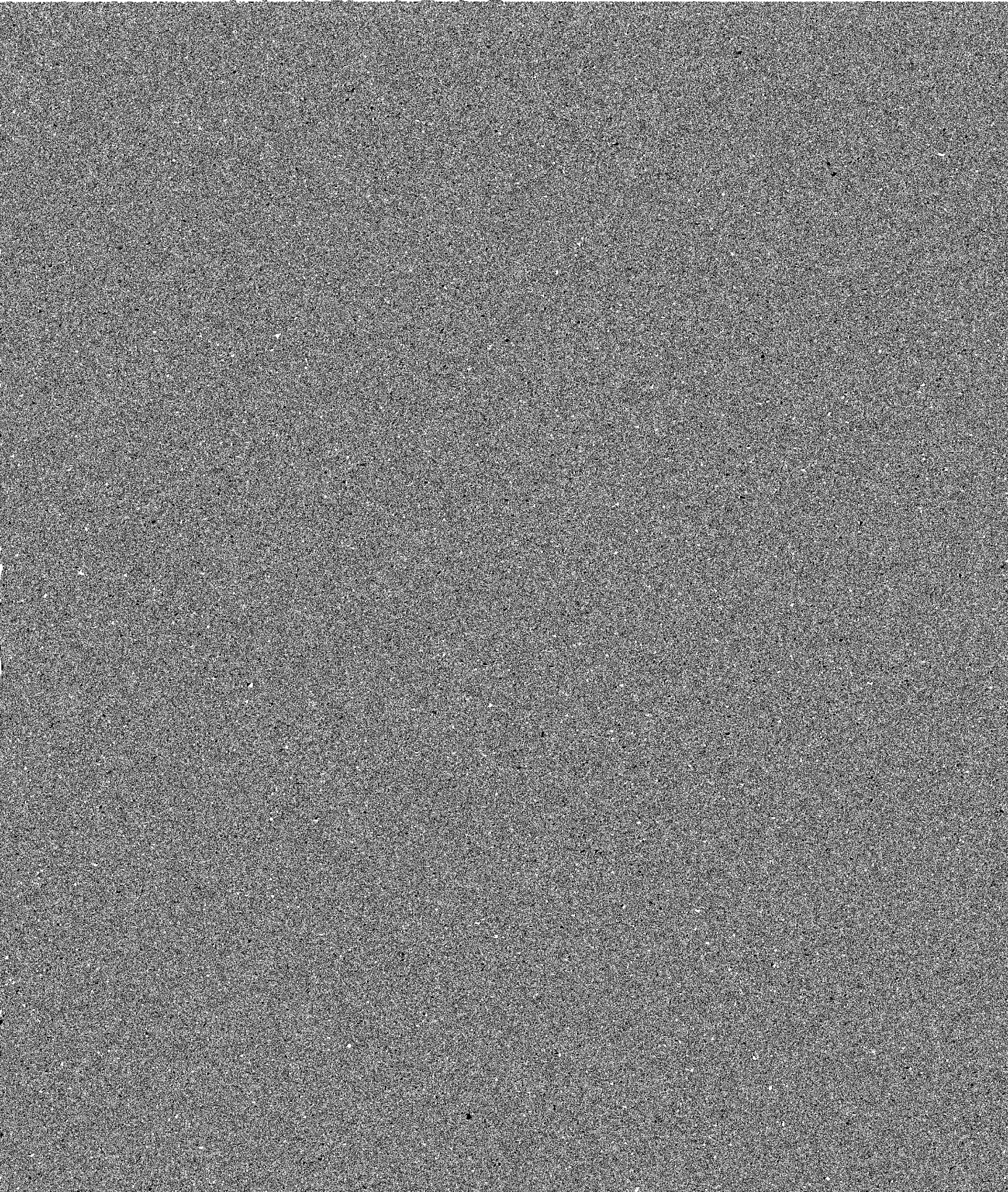
AT&T Mobility's services will result in the Board having continuous cellular services, equipment, accessories, applications, cellular-based technology solutions and support services through the end of

November 19, 2014

AUTHORIZATION:

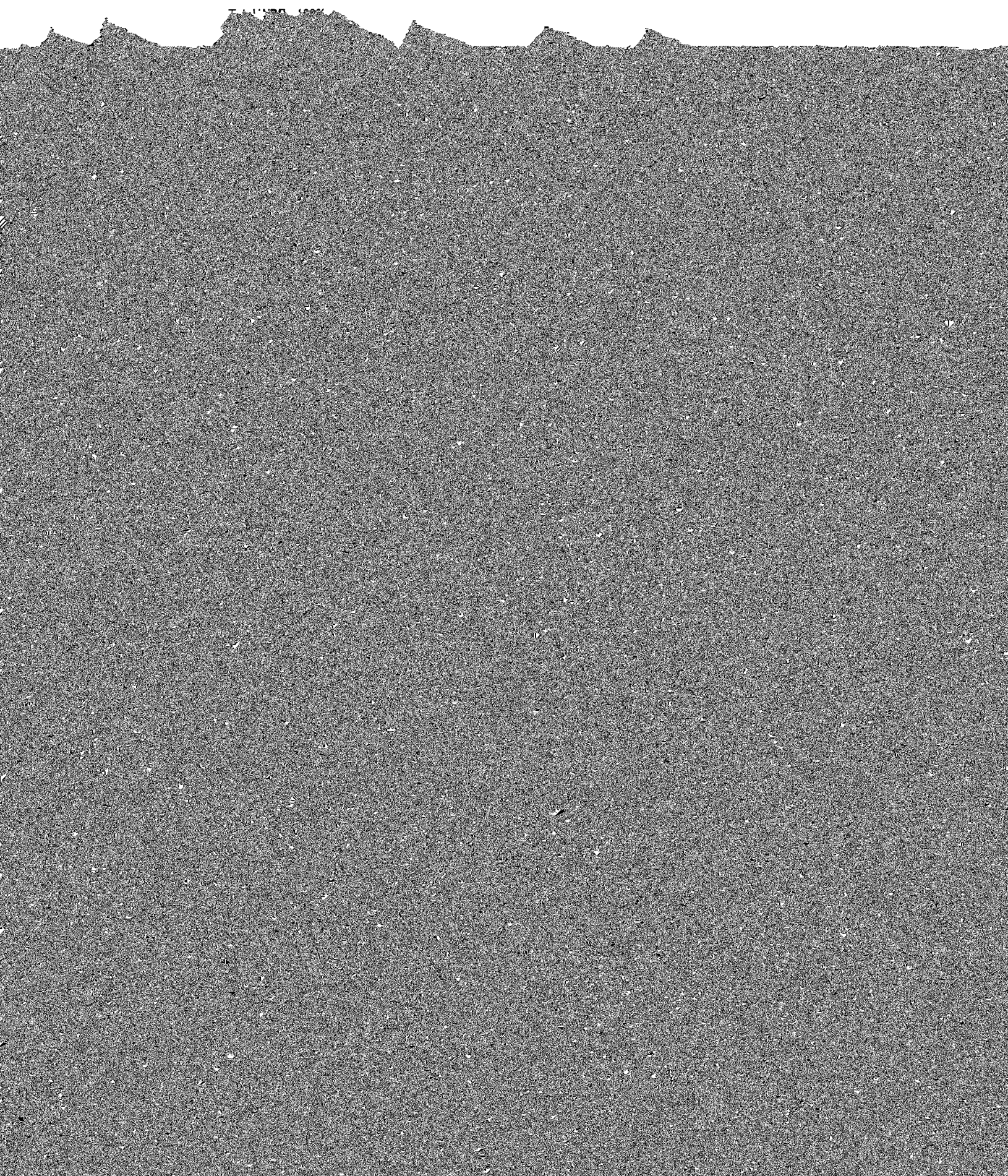


November 19, 2014



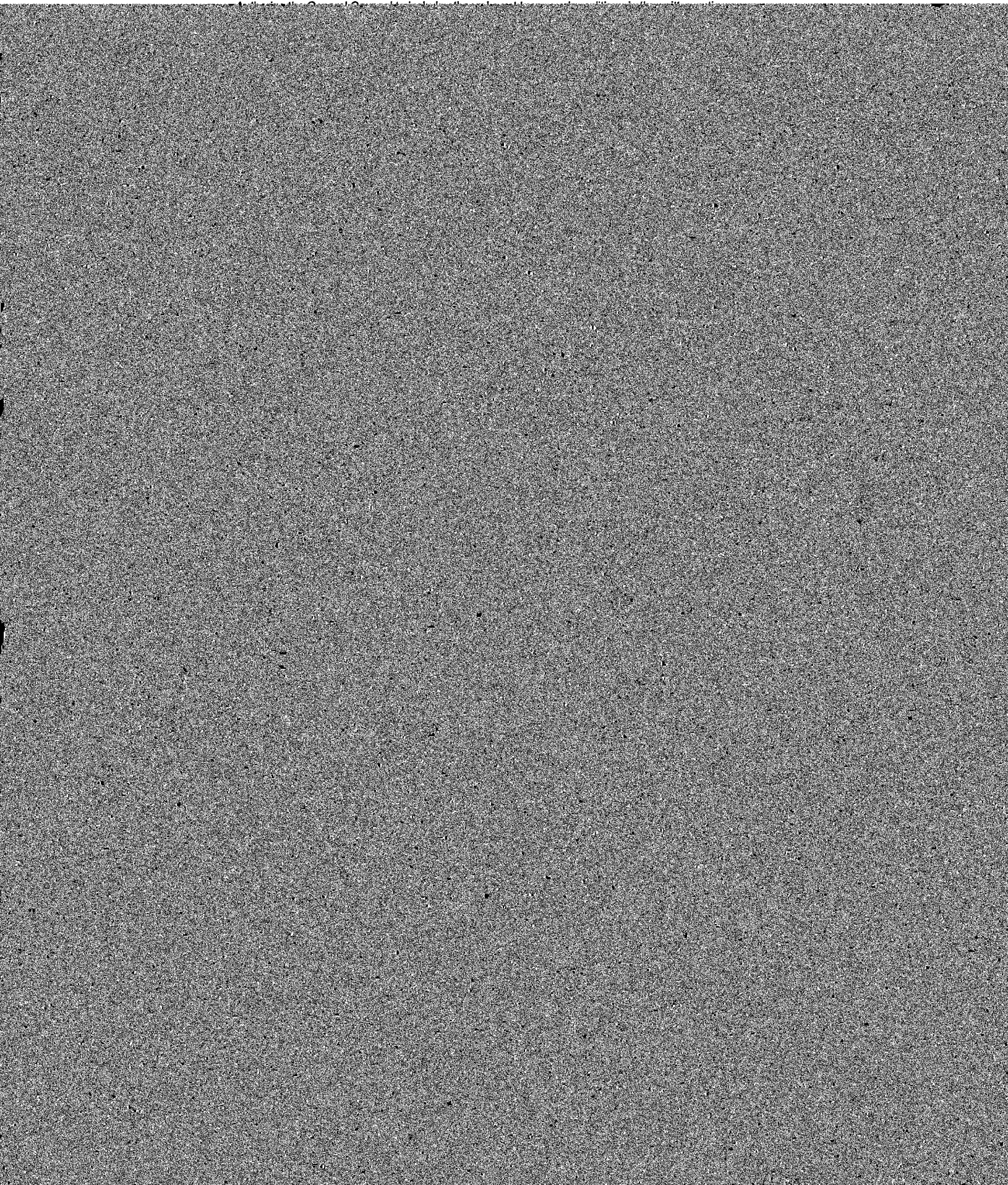
November 19, 2014

The Vendor has identified the following participation:



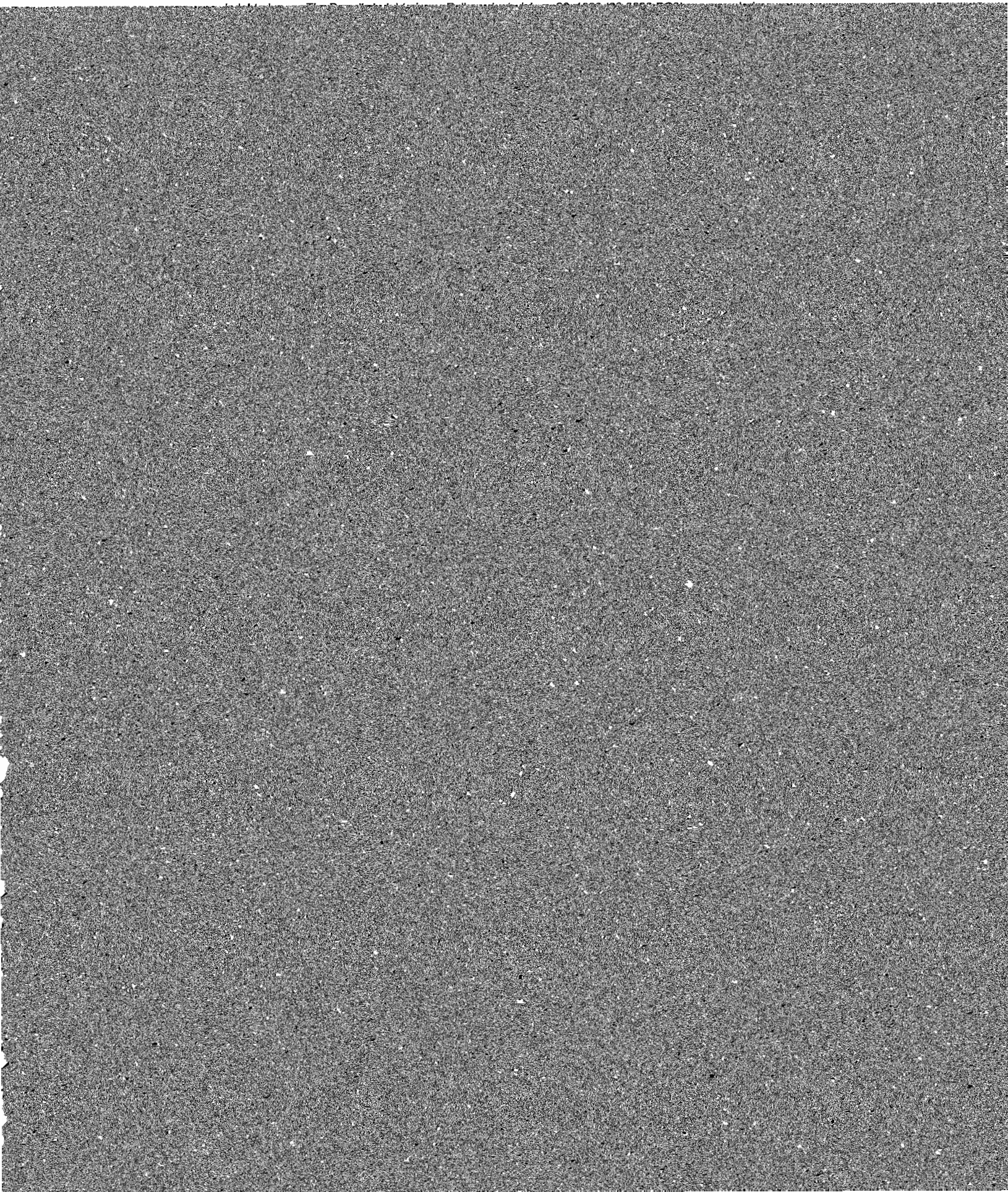
November 19, 2014

AUTHORIZATION:



November 19, 2014

November 19, 2014



November 19, 2014

AFFIRMATIVE ACTION:

This agreement is in full compliance with the goals required by the Remedial Program for Minority and Women Owned Business Enterprise Participation in Goods and Services Contracts. The MBE/WBE goals for this agreement are: 30% total MBE and 7% total WBE participation.

November 19, 2014

2. 14-0924-OP2: Authorize License Agreement with InterPark, Inc. for the Use of the Parking Garage
Located at 181 N Dearborn St for Employee Parking
Services: Real estate rental

