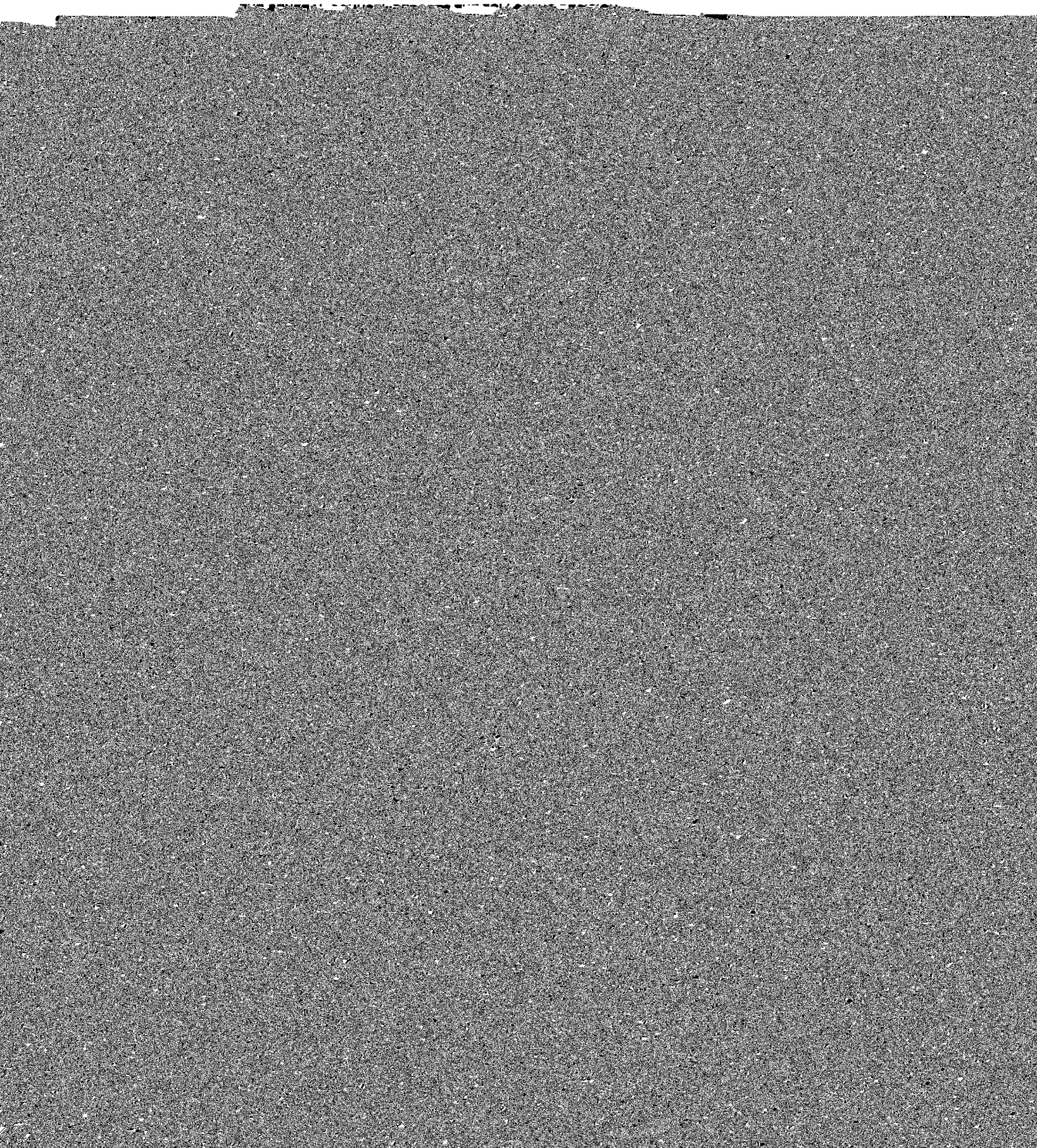


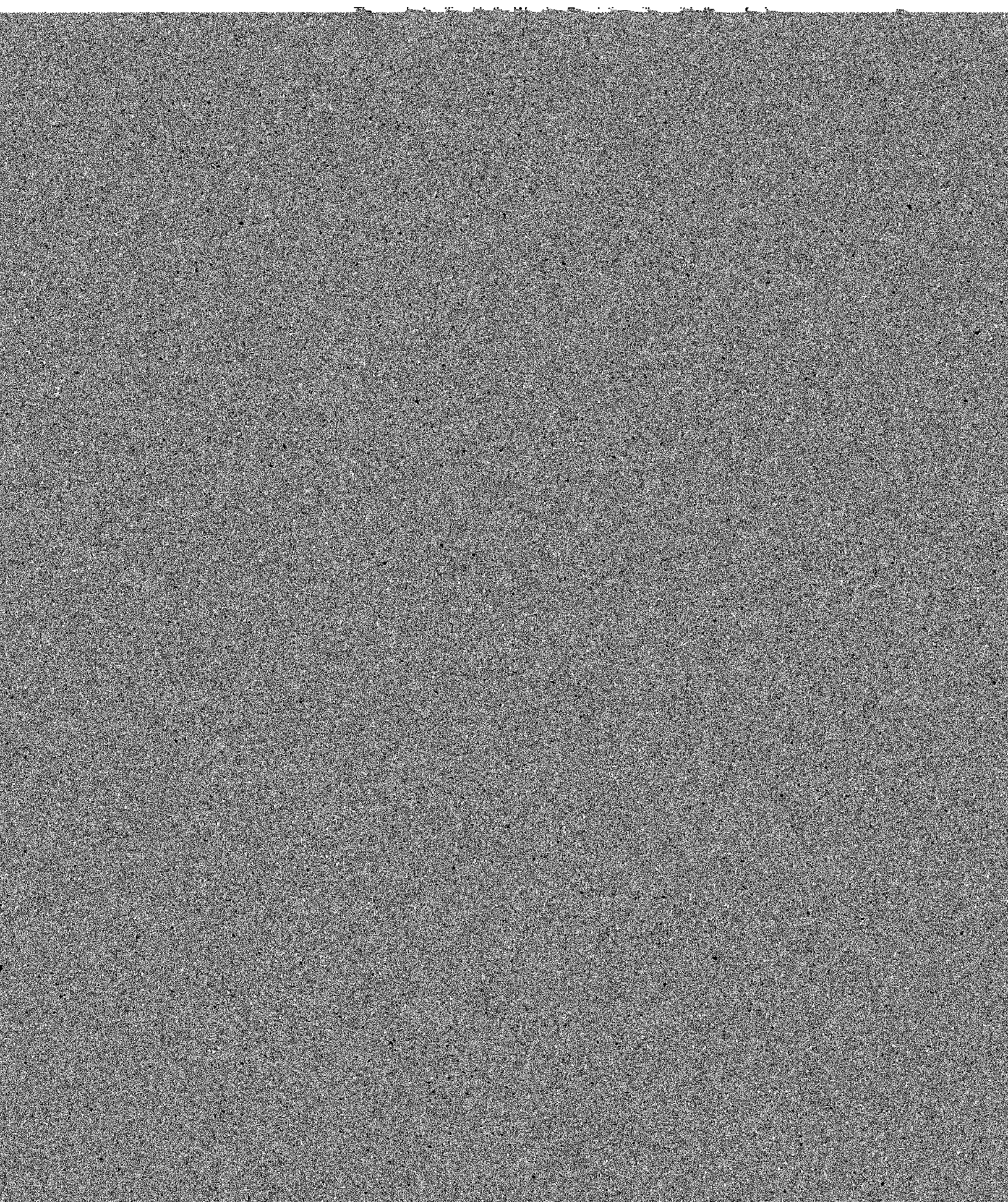
July 22, 2015

15-0722-AR5

WORKERS' COMPENSATION - PAYMENT FOR LUMP SUM SETTLEMENT FOR
WILLIAM JACKSON - CASE NO. 11 WC 46774



July 22, 2015



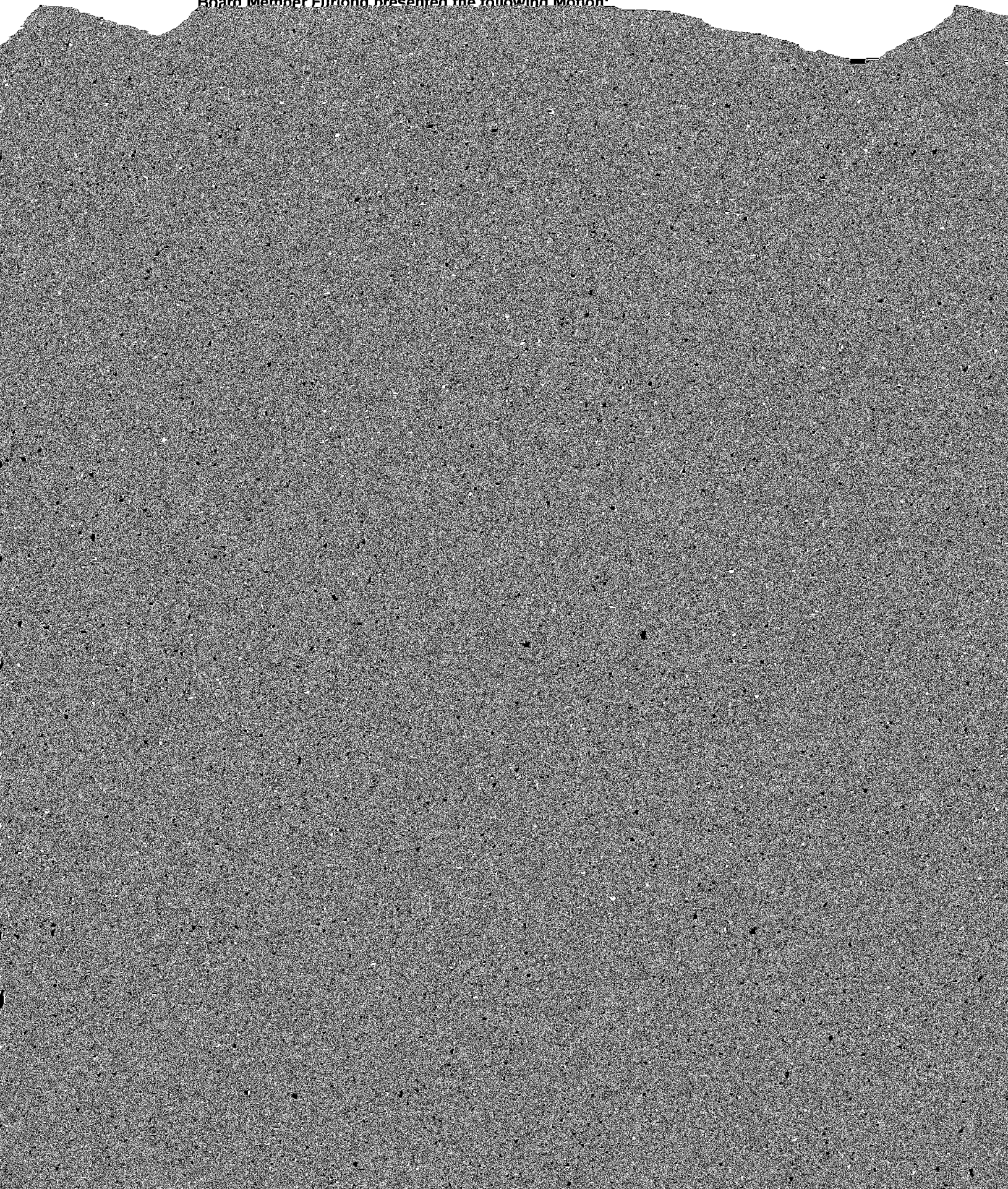
July 22, 2015

15-0722-RS5

RESOLUTION TO APPOINT

July 22, 2015

Board Member Eurlong presented the following Motion:



July 22, 2015

15 0722 001

July 22, 2015

NOW, THEREFORE, Be It and It Is Hereby Resolved by the Chicago Board of Education of the

Board of Education of the City of Chicago, that

July 22, 2015

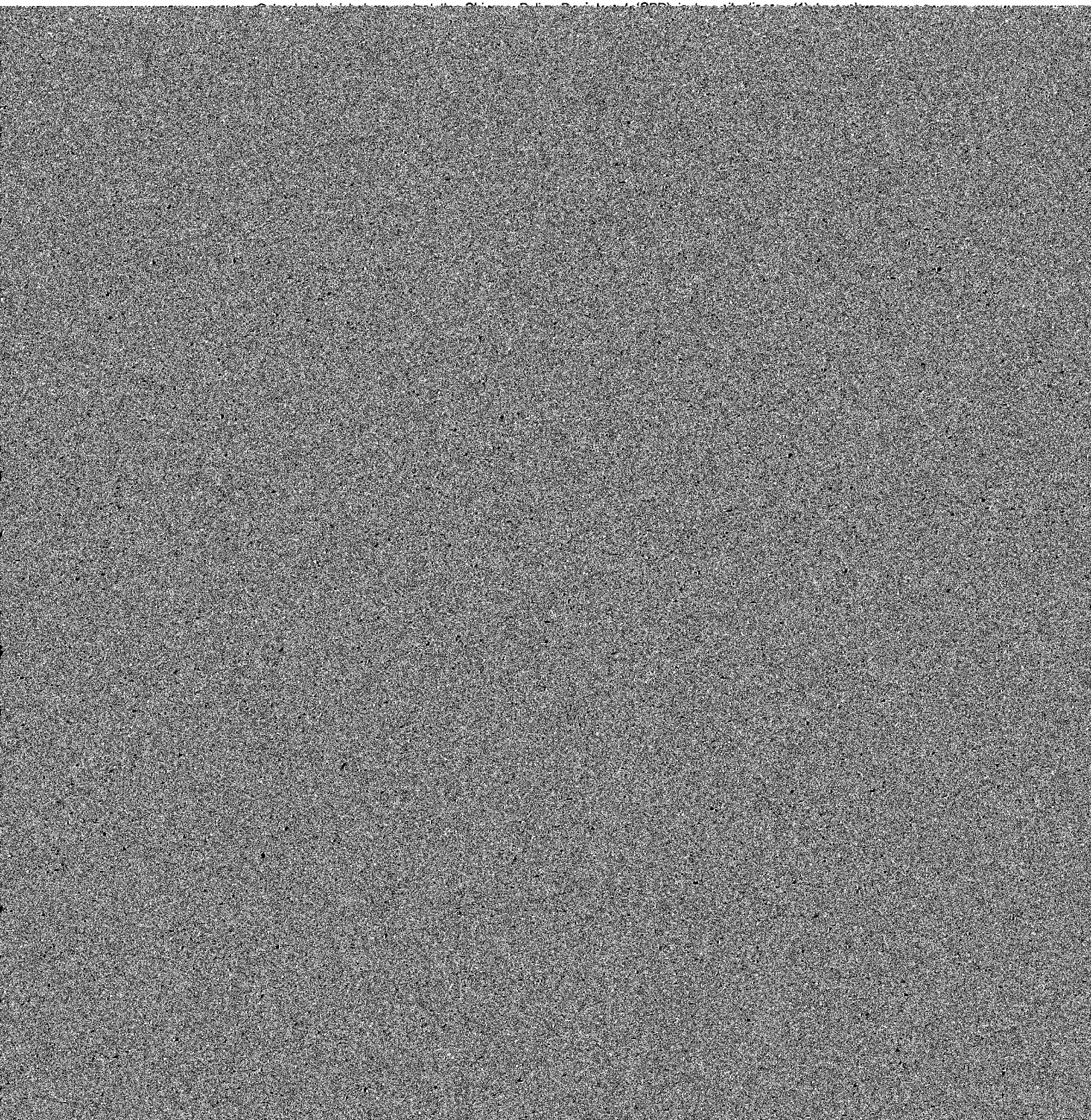
July 22, 2015

a) If a student is suspended, the principal or his/her designee may choose to give the student a



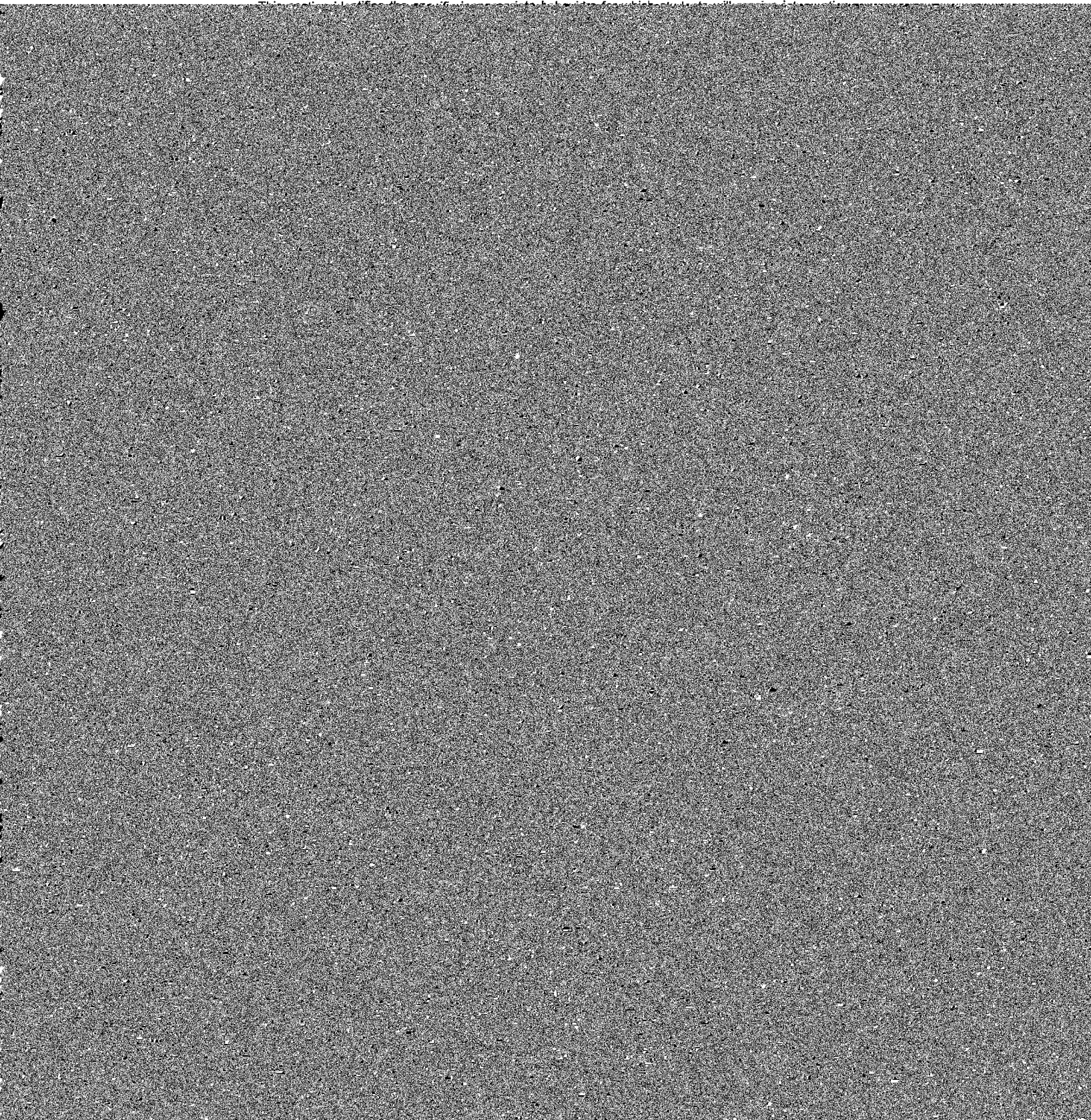
July 22, 2015

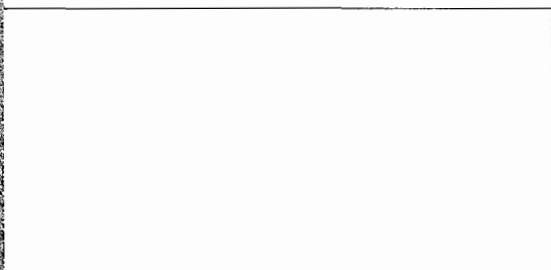
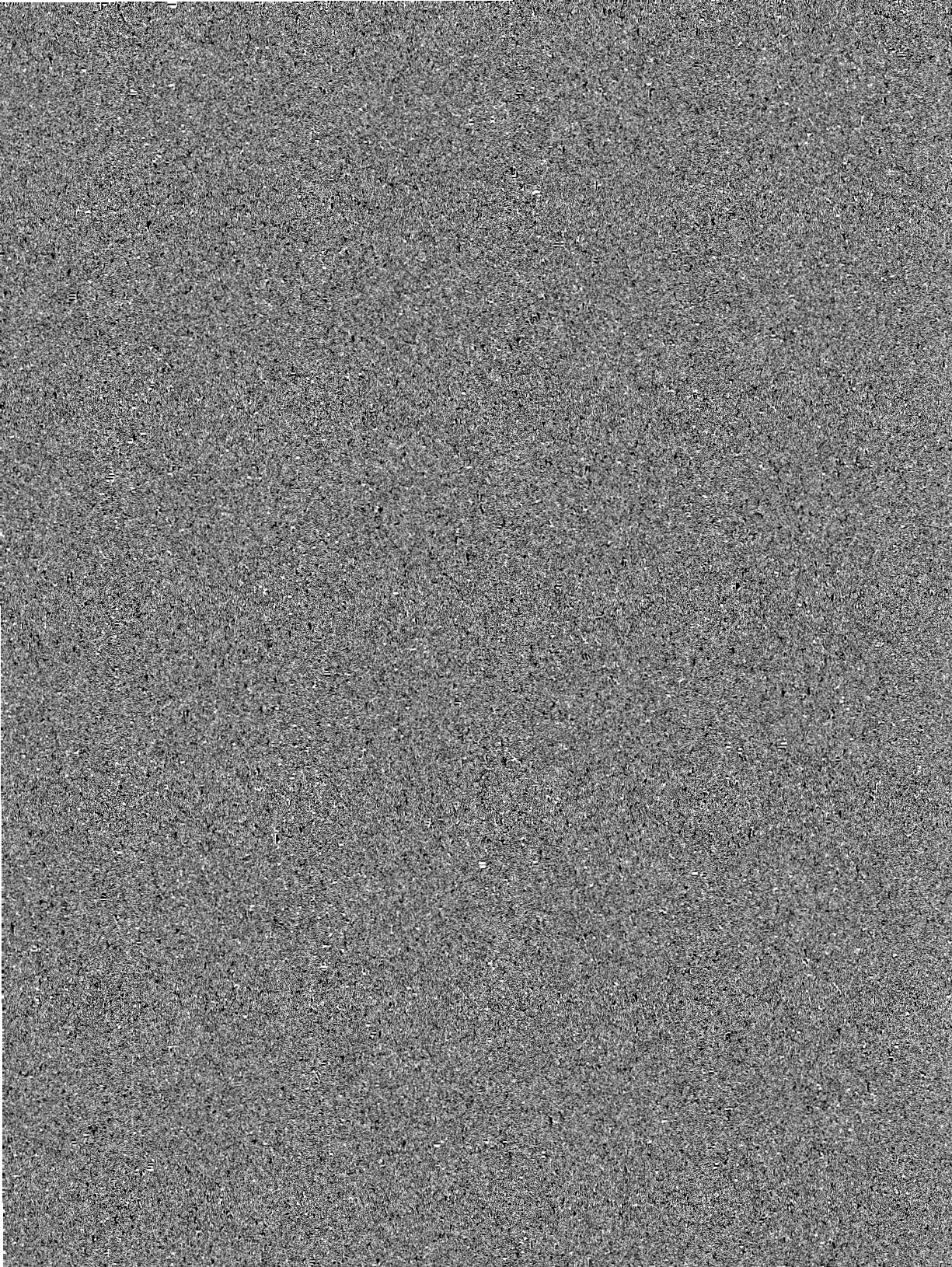
POLICE NOTIFICATION GUIDELINES



July 22, 2015

STUDENT BEHAVIORS COVERED BY THE SCC

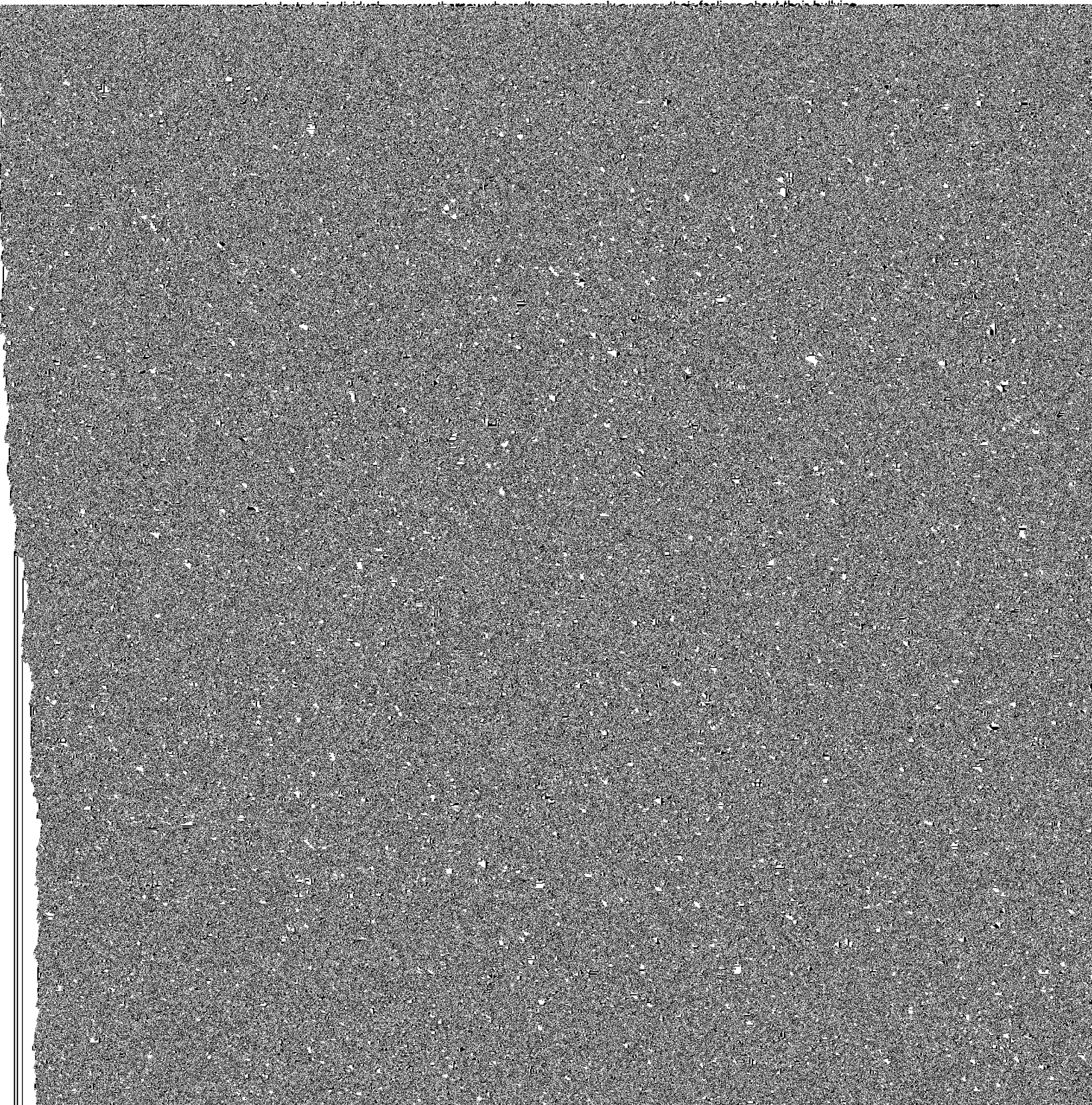




PS school for disciplinary reasons. All disciplinary reassignments must be refer to the Board's Comprehensive Policy on the Enrollment and Transfer of 20).
y devices for one semester (for first violation) or up to one year (for second or
one semester (for first violation) or up to one year (for second or subsequent

July 22, 2015

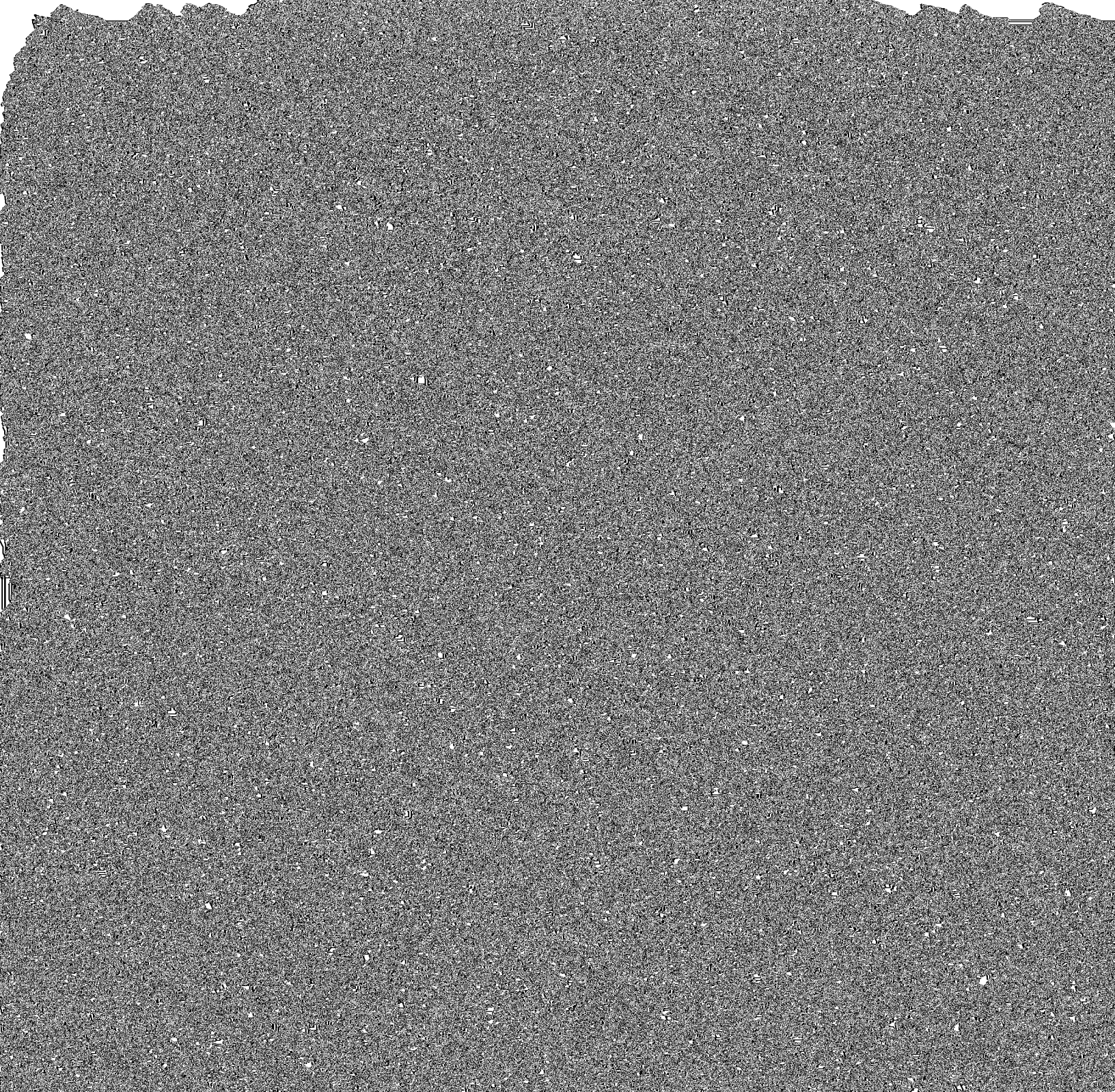
The targets of bullying need protection from bullies, but may also need support and help in changing their own behavior. The Principal/Designee shall ask a school mental health professional to refer these



July 22, 2015

ATTACHMENT A
Chicago Public Schools
Form for Reporting Bullying and Retaliation

NOTE: The reporter may remain anonymous, but no discipline will be imposed based solely upon an



July 22, 2015

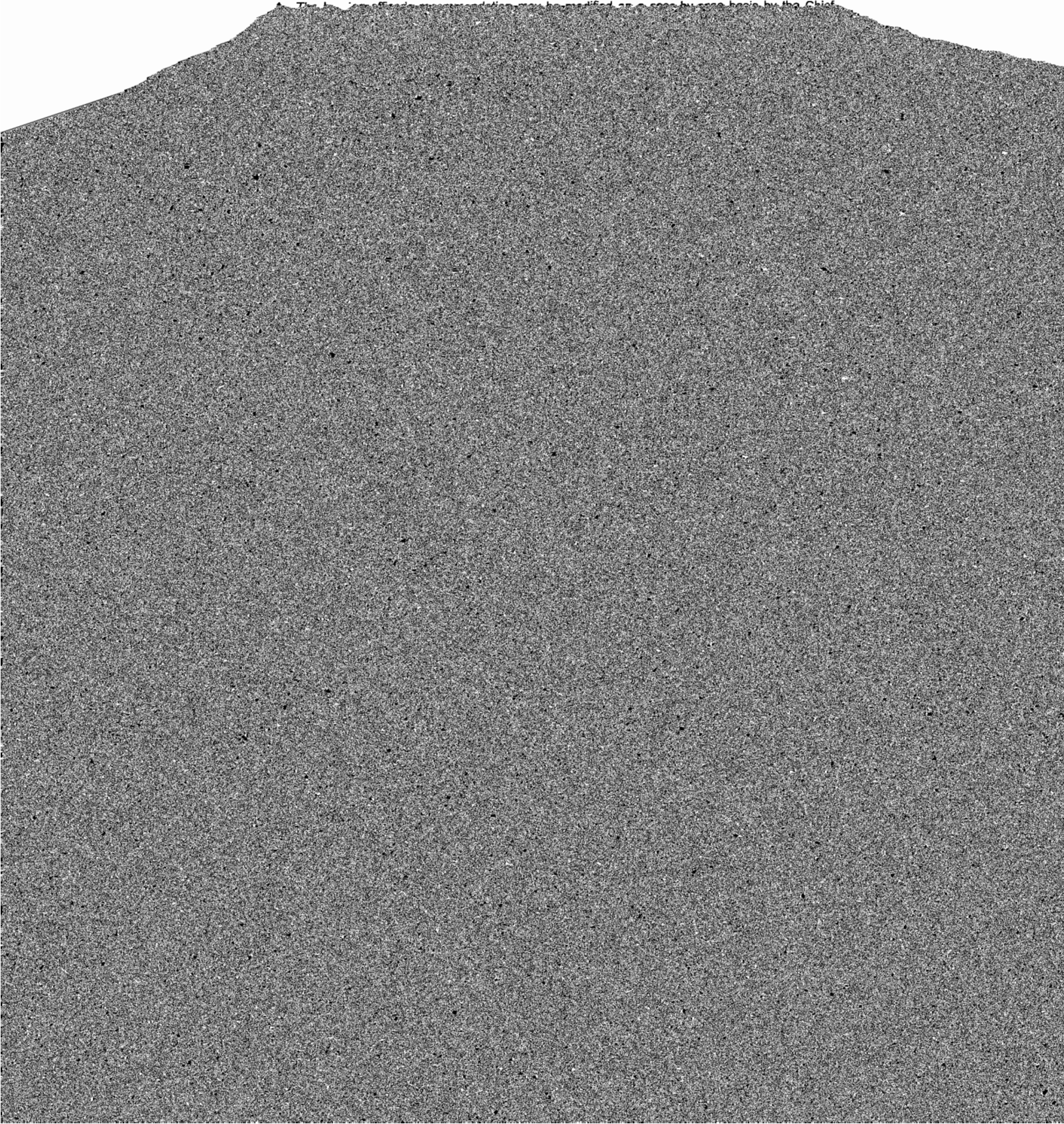
**PROCEDURAL SAFEGUARDS FOR DISCIPLINE OF STUDENTS WITH
DISABILITIES/IMPAIRMENTS³⁴**

School officials may suspend students with disabilities/impairments and deny educational services for a

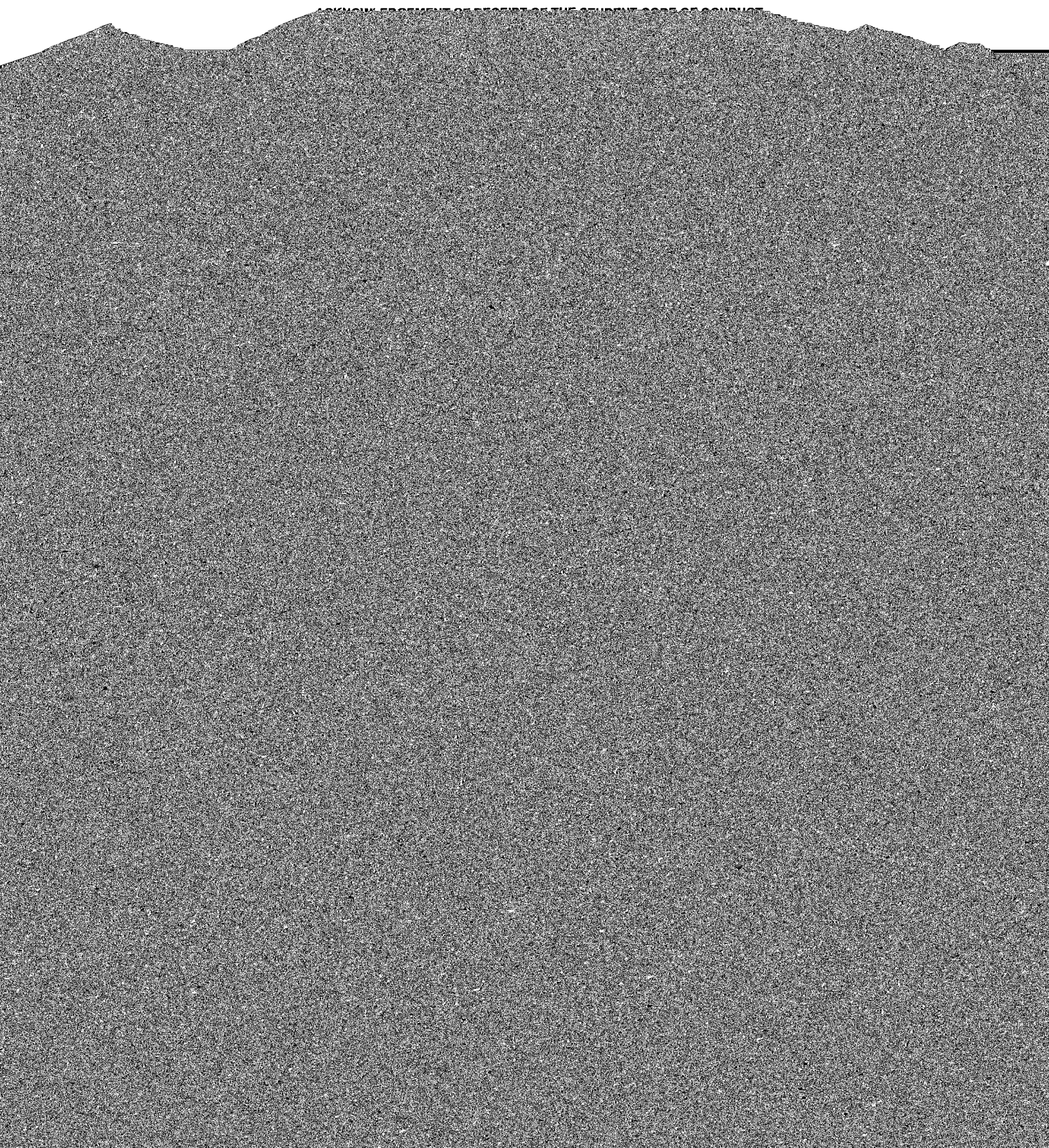


July 22, 2015

The following information may be modified on a case-by-case basis by the Chief



July 22, 2015



July 22, 2015

1314. Transfer from Capital/Operations - City Wide to Chicago Vocational Career Academy

20150126999

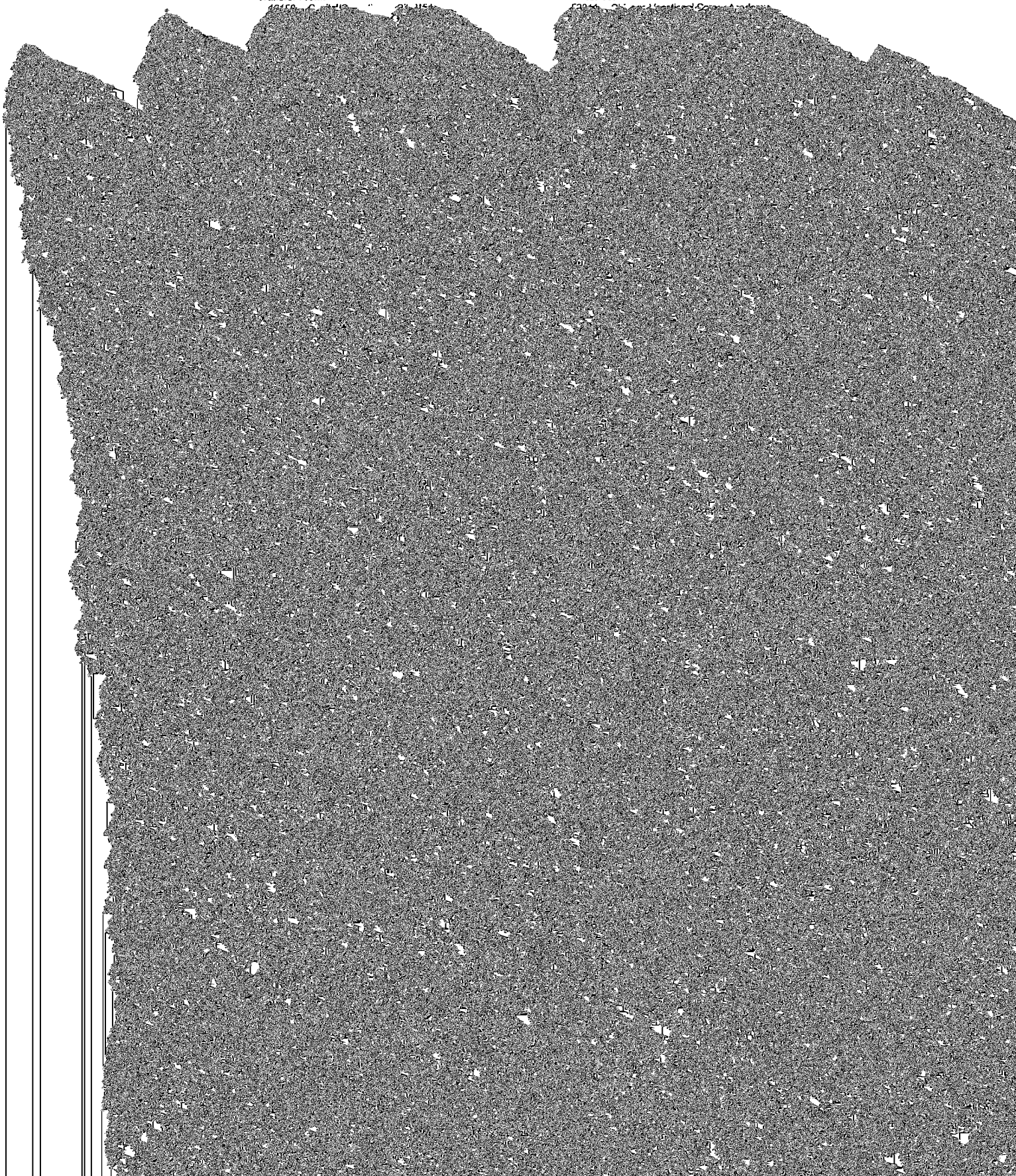
Rationale: Funds Transfer From Award# 2015-436-00-07 To Project# 2012-53011-SIP ; Change Reason : NA

Transfer From:

Transfer To:

436-00-07-07-1154

436-00-07-07-1154



LSC Evaluation of the Principal 2015-16

Principal Name: _____

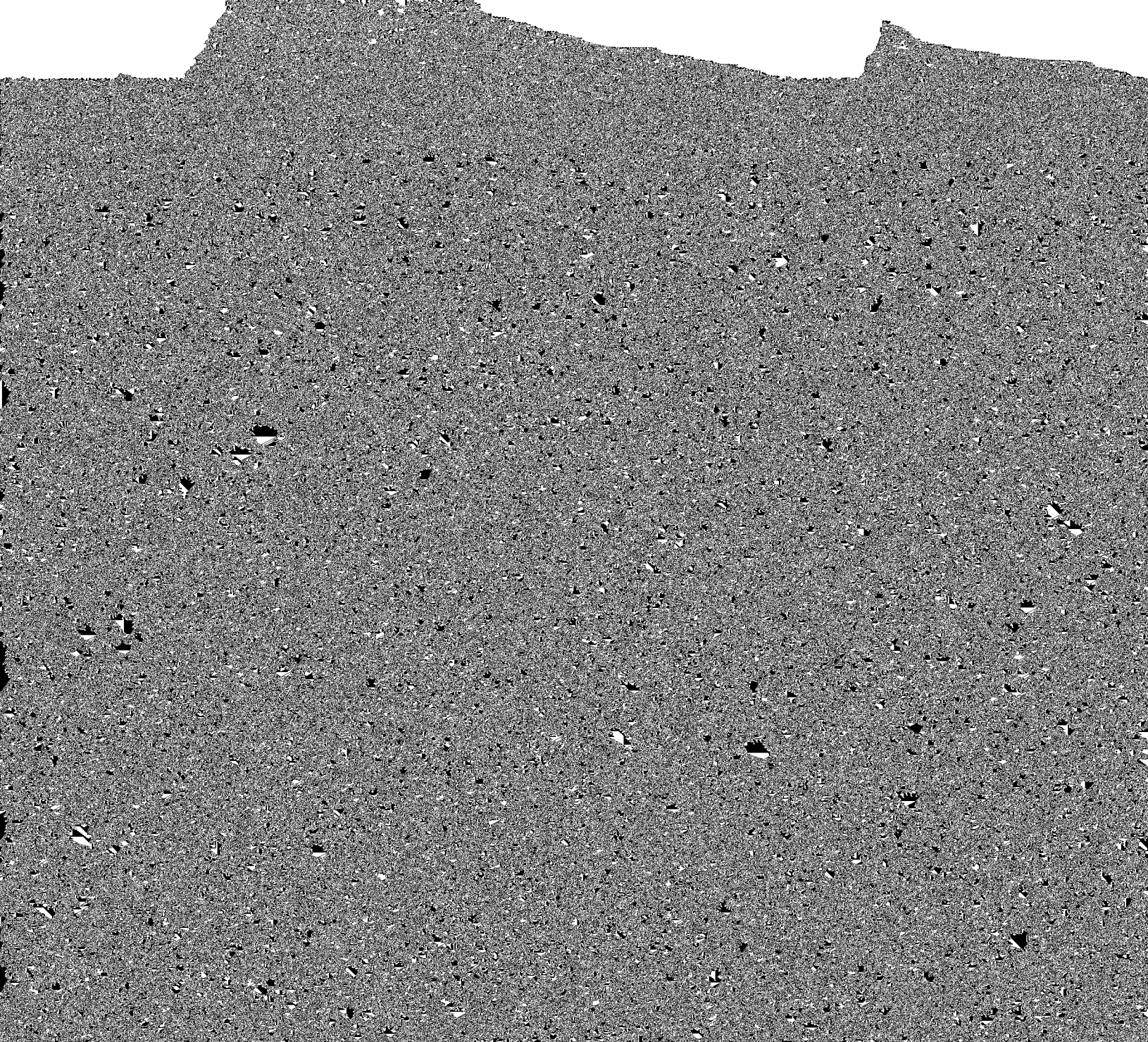
School Name: _____

Rating Period: _____

Principal Professional Practice

Enter a number for each of the Key Behaviors below using the following scale: 1 = Strongly Disagree; 2 = Disagree; 3 = Agree; 4 = Strongly Agree.

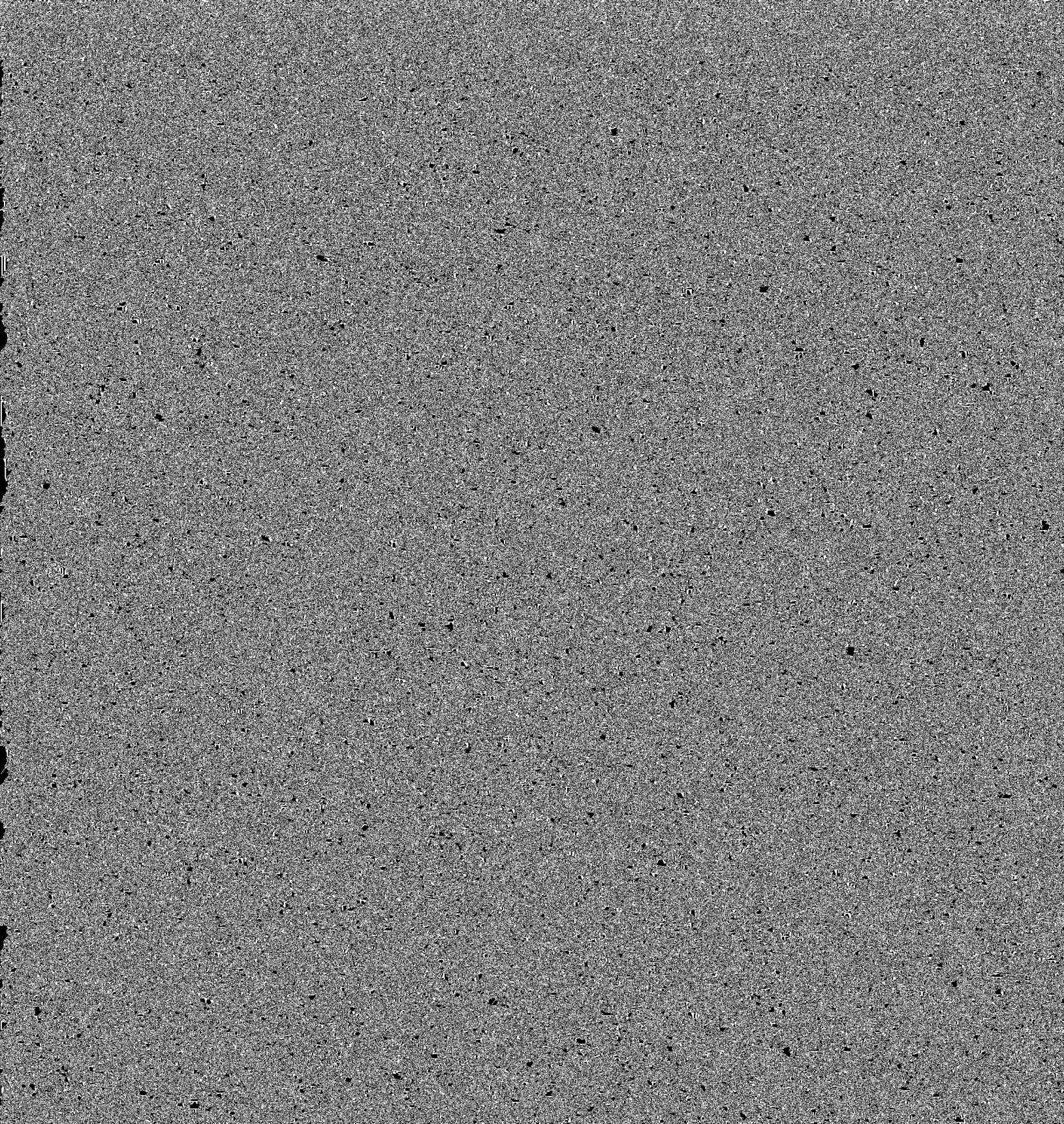
Competency A: Champions Teacher and Staff Excellence Through a Focus on Continuous Improvement to Develop and Achieve the Vision of High Expectations for All Students



LSC Evaluation of the Principal 2015-16

Principal Professional Practice Summary

Complete the table below by entering the Competency Score from pages 1 and 2 into the Competency Score column. These Competency Scores will be used to determine the overall evaluation score.

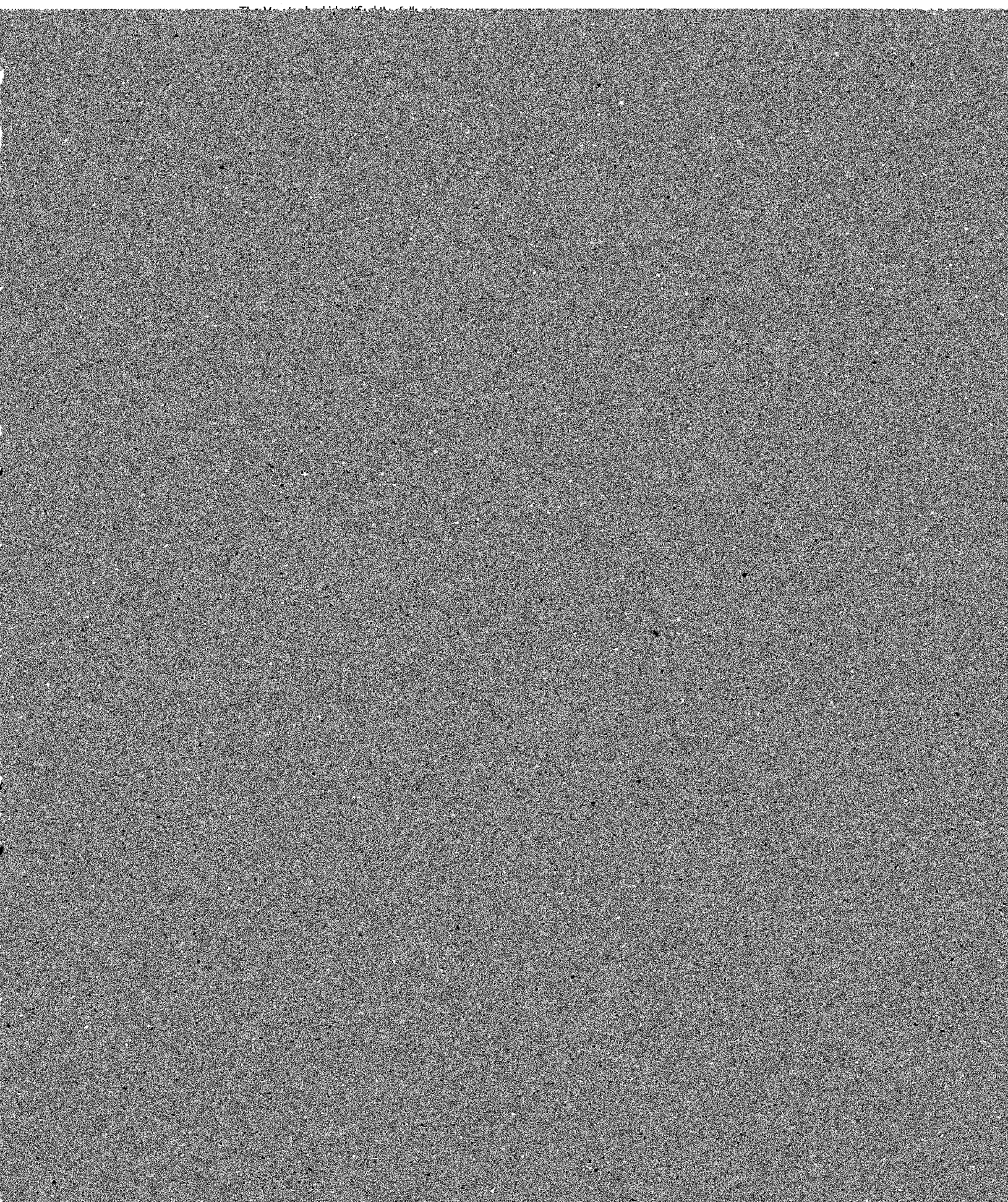


LSC Evaluation of the Principal 2015-16

Student Growth and Other Measures

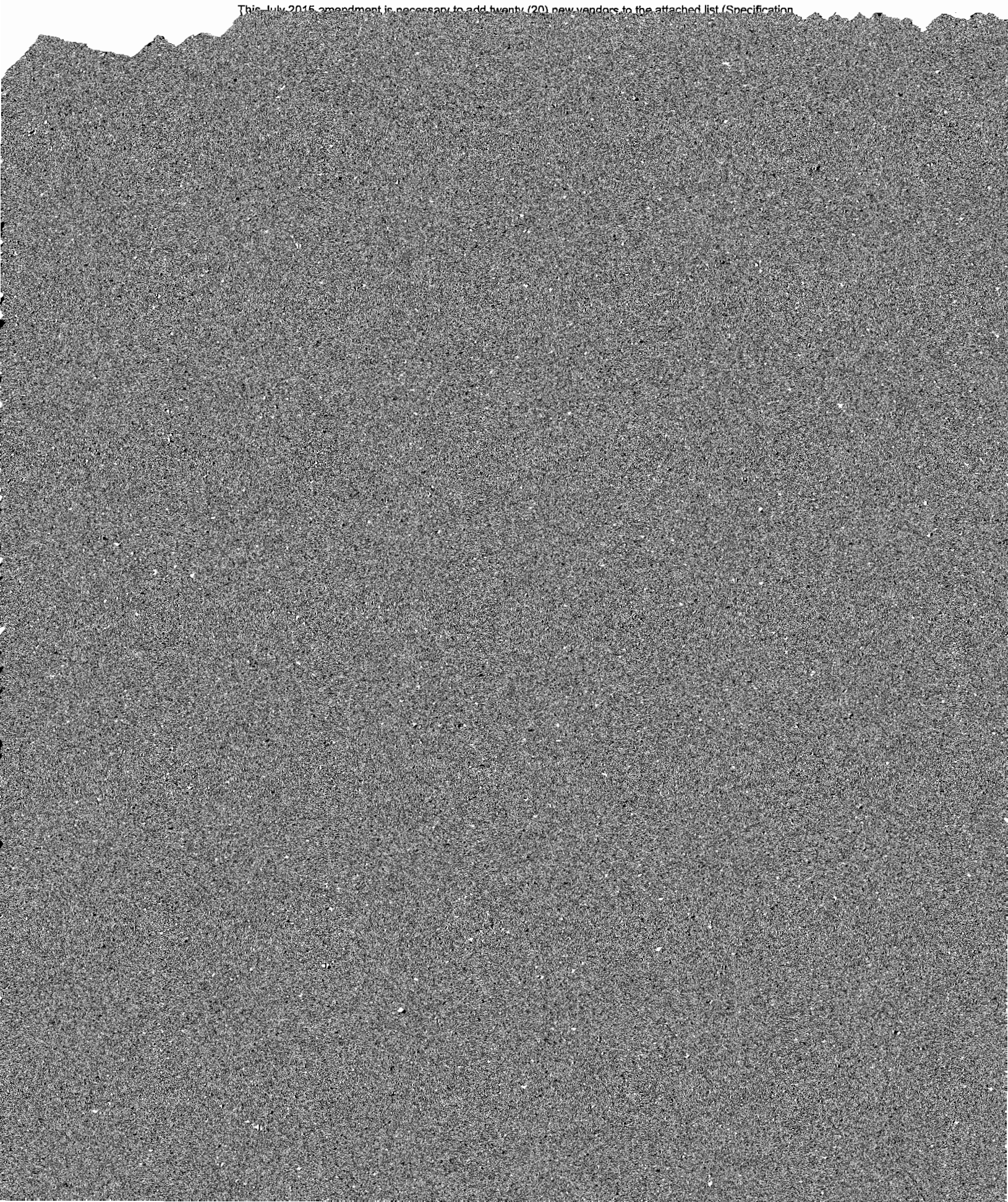
The Student Growth and Other Measures score is calculated by the CPS Office of Accountability based on the scoring found in the Board's School

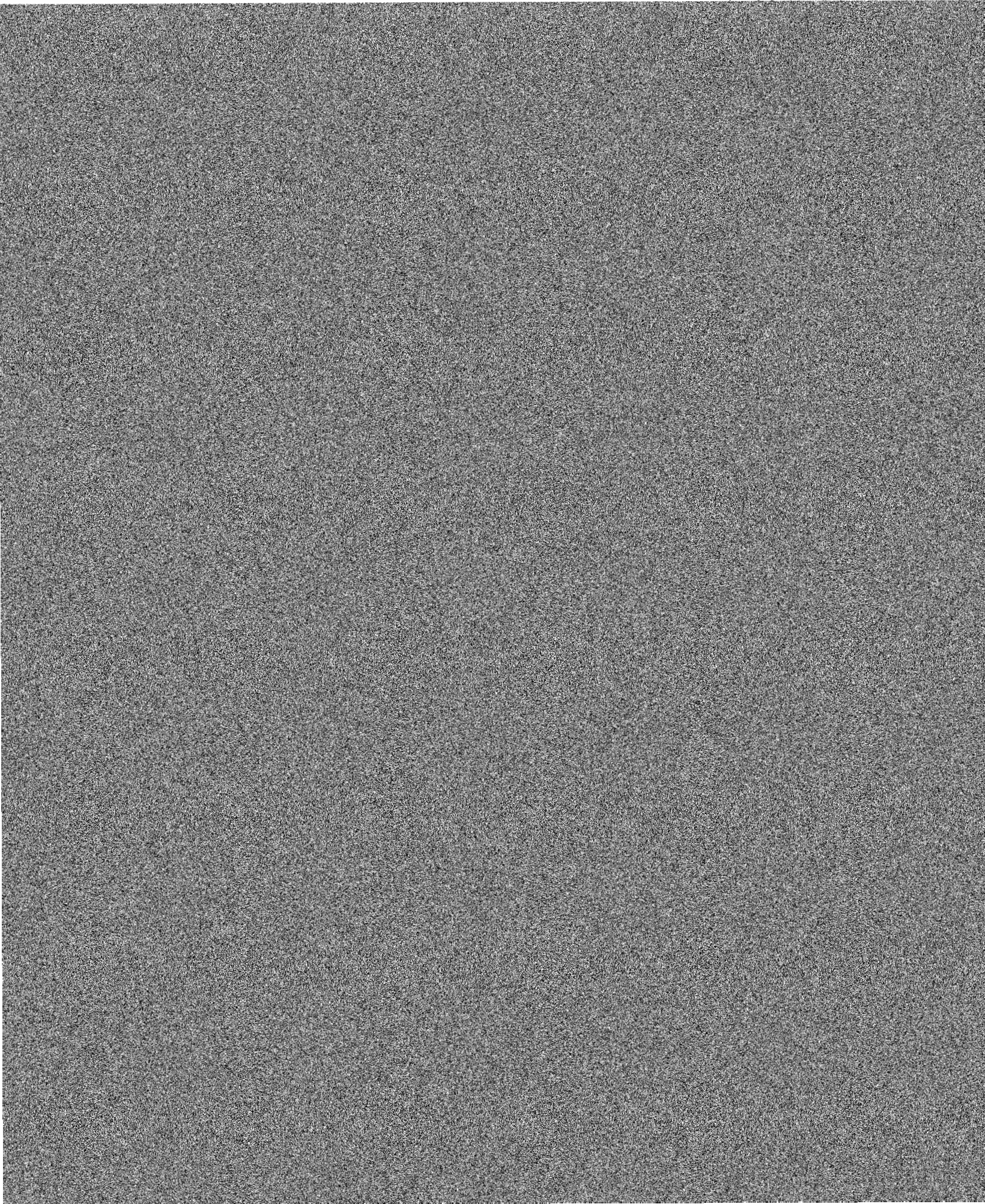
July 22, 2015



July 22, 2015

This July 2015 amendment is necessary to add twenty (20) new vendors to the attached list. (Specifying



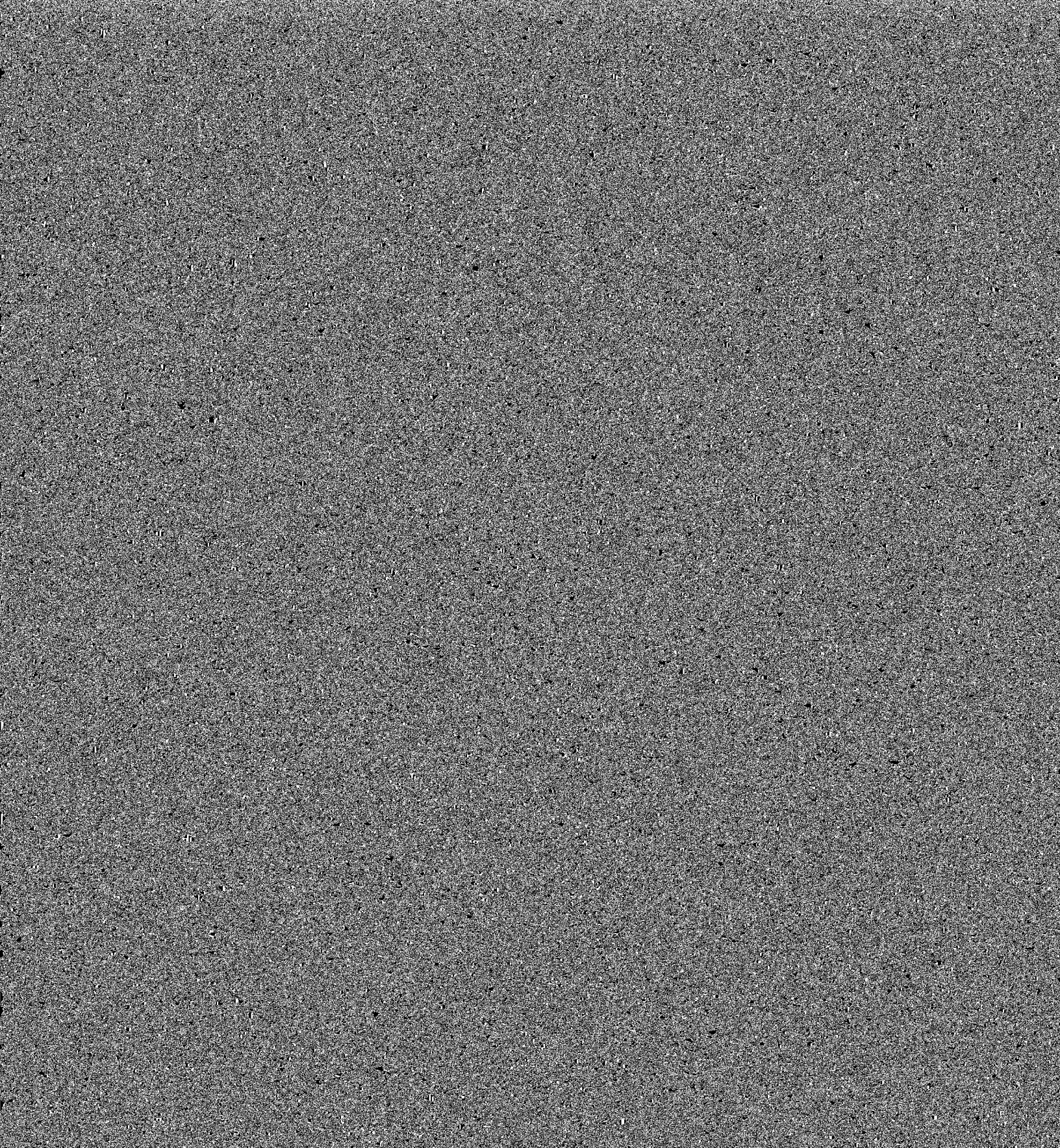


41)

Vendor # 16701

45)

Vendor # 01960



July 22, 2015

July 22, 2015

USER INFORMATION :

Project
Manager: 10845 - Magnet, Gifted and IB Programs
42 West Madison Street
Chicago, IL 60602
Klimesh, Mr. Mark S
773-535-5153

PROJECT AGREEMENT

July 22, 2015

9. ISP (Individual Success Plans) (60 hrs.):

Student-level annualized edoc instances that can be shared across schools (contains attendance, academic, behavior, etc.), development of separate intervention module to track ISP progress (not shared), and develop reporting.

10. ECCE (Early Childhood) (20 hrs.):

Build out group intervention module to allow tracking of ECCE programs, customized attendance reports, and tracking assessments.

11. Thrive Data Exports (30 hrs.):

Build out group intervention module to allow tracking of ECCE programs, customized attendance reports, and tracking assessments.

July 22, 2015

plans and specifications for the respective projects. Proposals, schedules of bids, and other supporting documents are on file in the Department of Operations. These contracts have been awarded in

July 22, 2015

COMPENSATION:

Vendor shall be paid during this option period in accordance with the unit pricing contained in the

July 22, 2015

COMPENSATION:

Vendor shall be paid as set forth in the agreement. Estimated annual costs for the two (2) year term are set forth below: \$600,000 FY 16 and FY17 in the agreement.

July 22, 2015

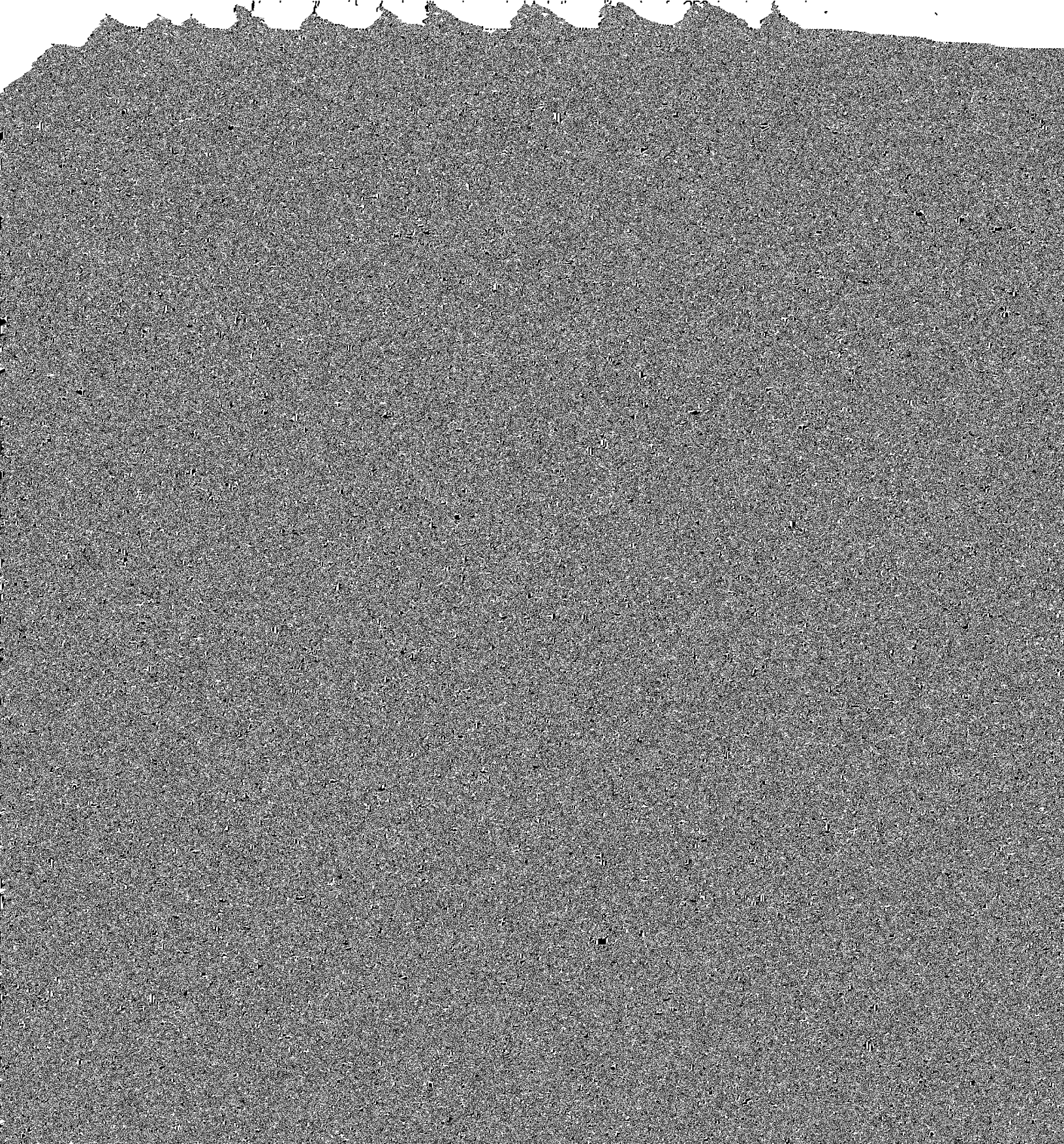
TERM:

The term of each agreement shall commence on September 1, 2015 and shall end August 31, 2018. The agreements shall have two (2) options to renew for periods of one (1) year each.

EARLY TERMINATION RIGHT:

The Board shall have the right to terminate each agreement with 30 days written notice.

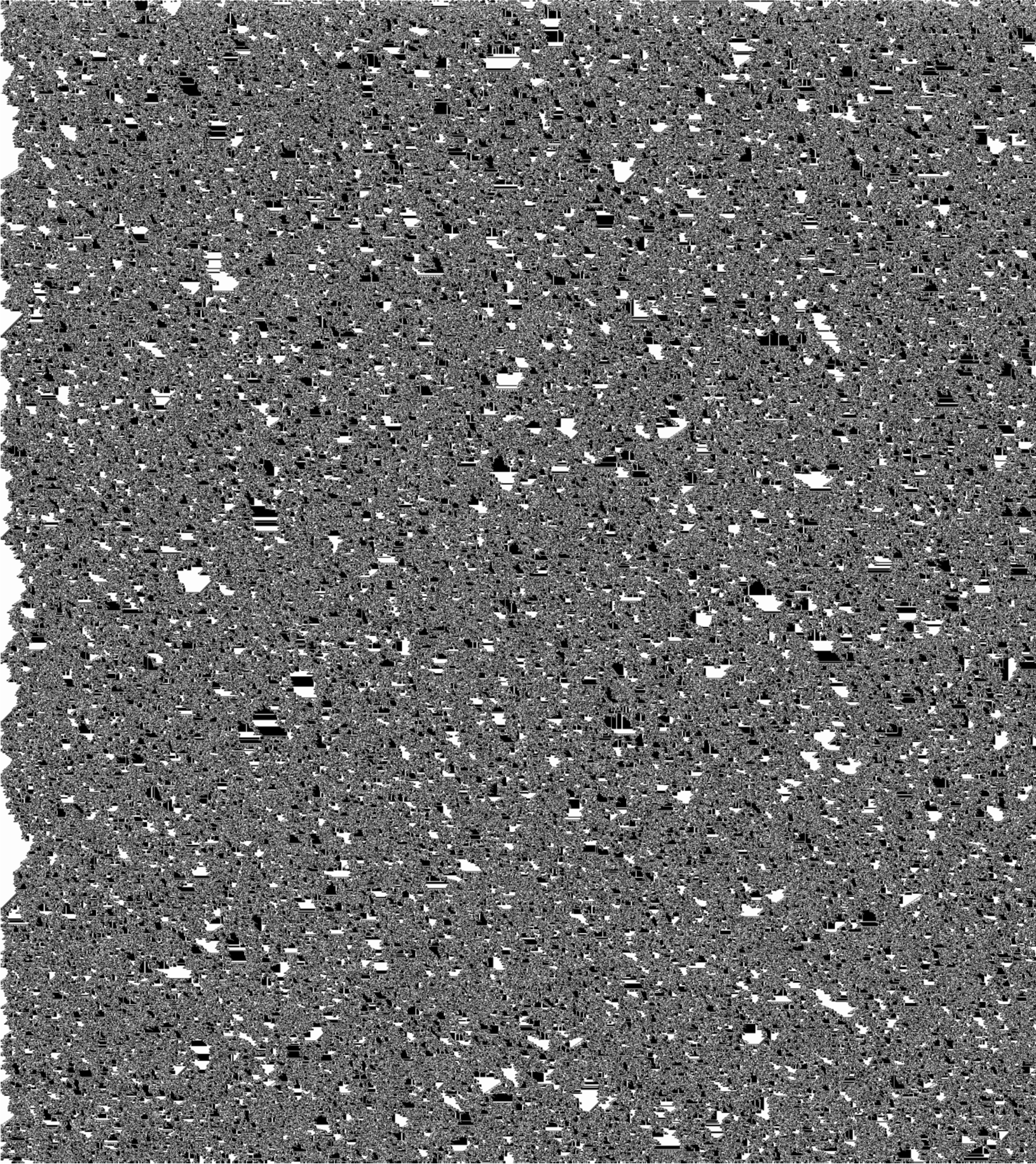
SCOPE OF SERVICES:

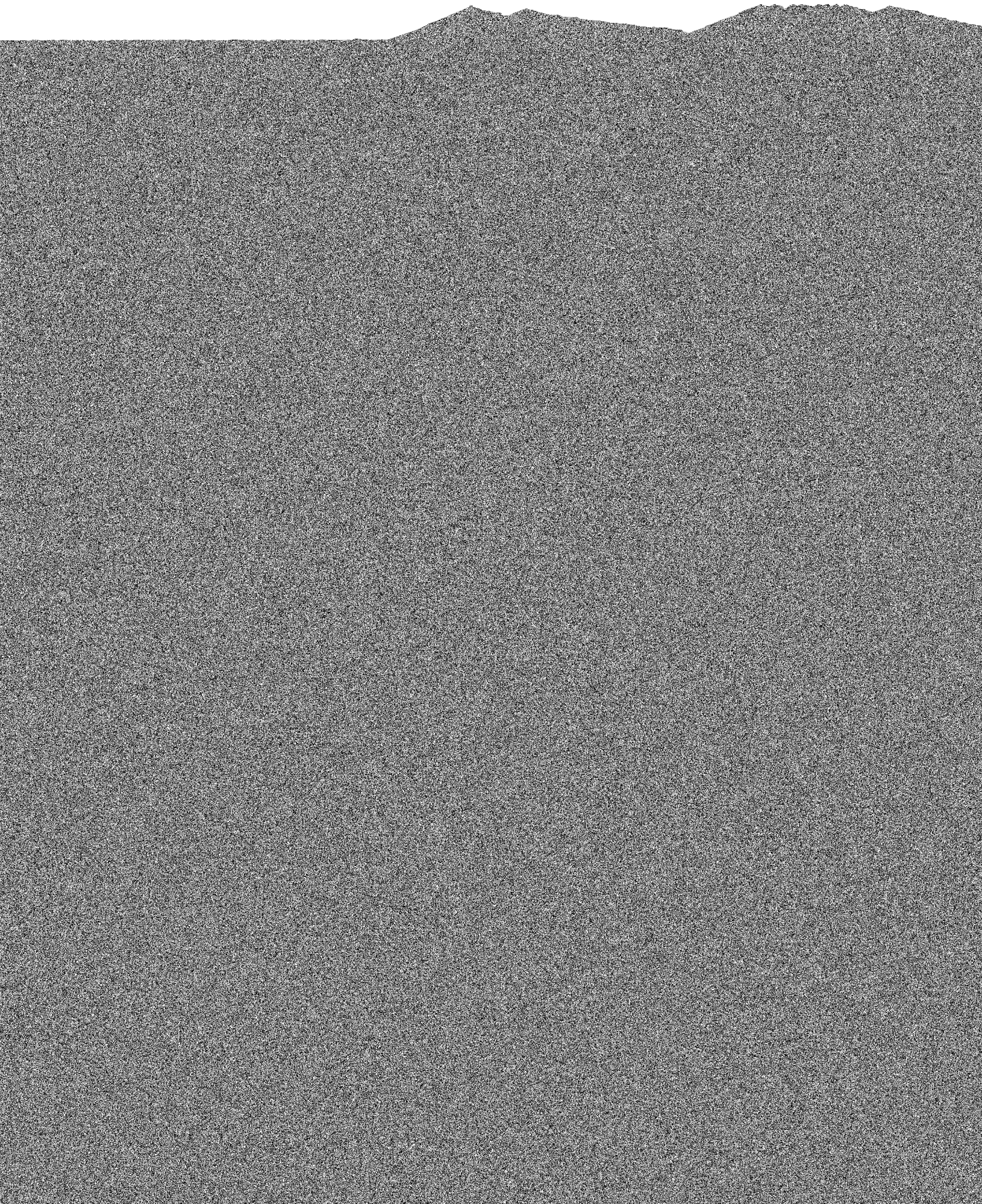


July 22, 2015

15-0722-PR11

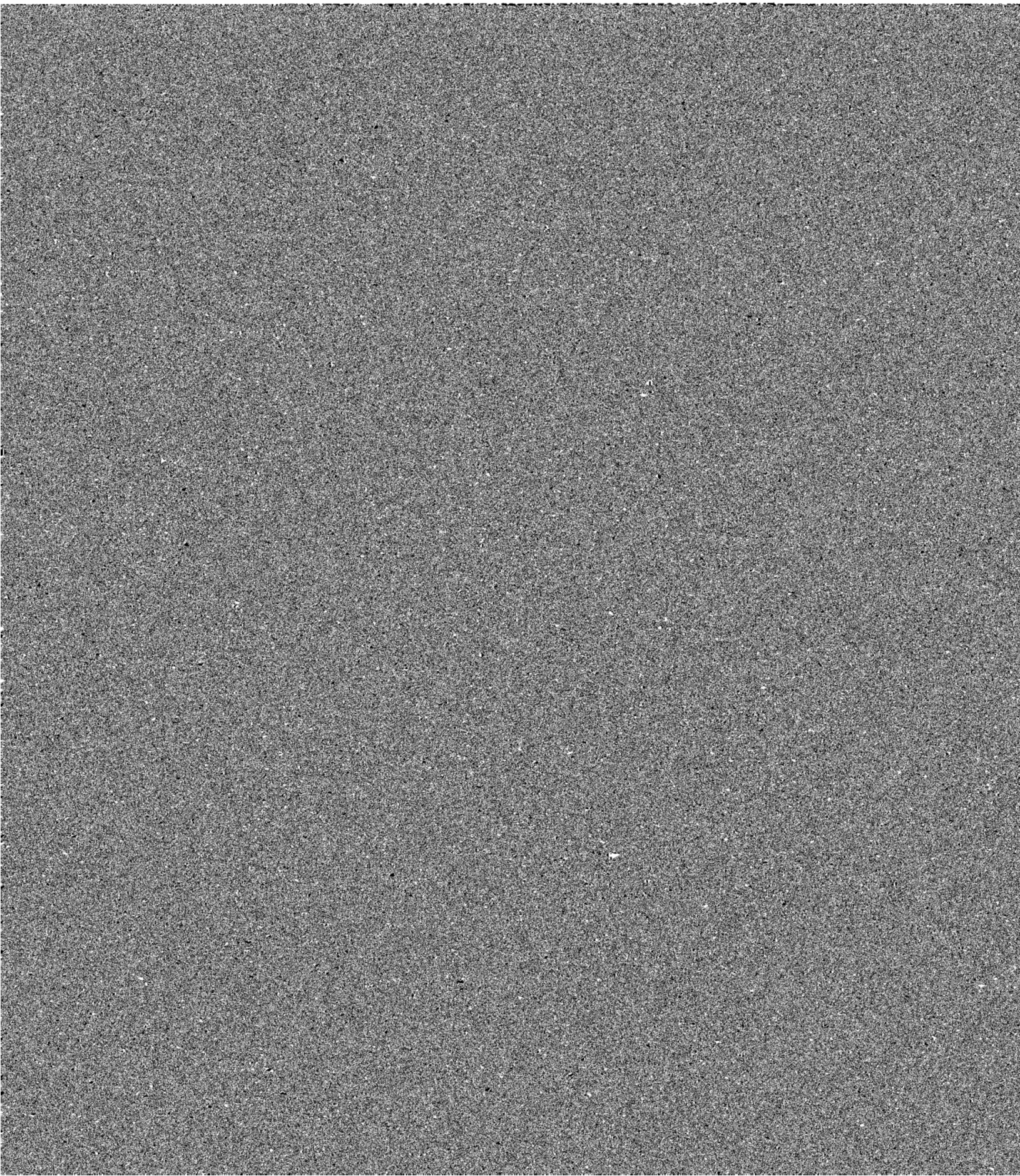
**AMEND BOARD REPORT 15-0527-PR10
AUTHORIZE A NEW AGREEMENT WITH HITACHI CONSULTING FOR ENTERPRISE FINANCIAL**





July 22, 2015

15-0722-PR13

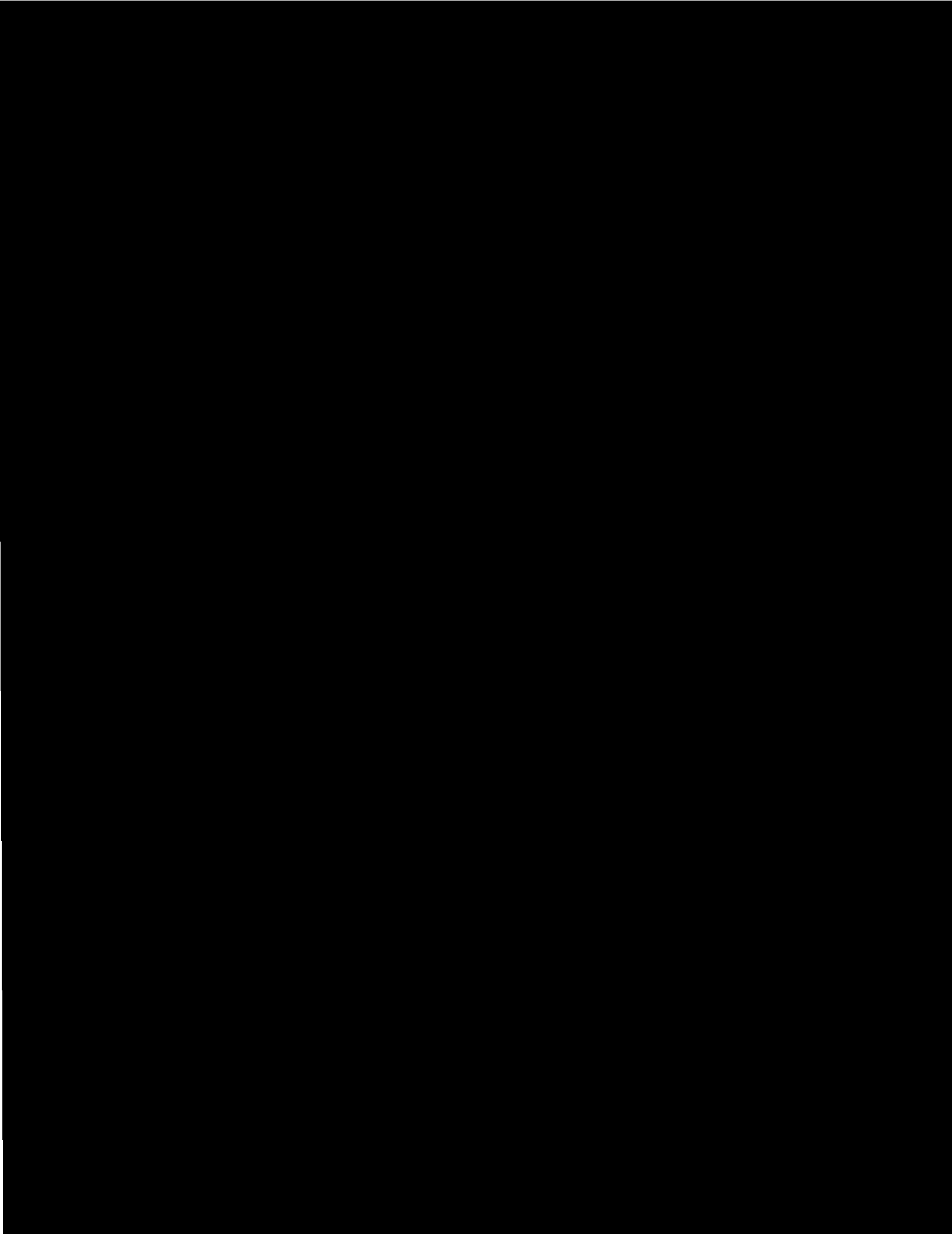


July 22, 2015

within the Board for the purpose of auditing the standard functionality of the Licensed Software and (iii) to improve the Licensed Software. In its use of the Board's data, vendor will not use or disclose any personal information particular to any student.

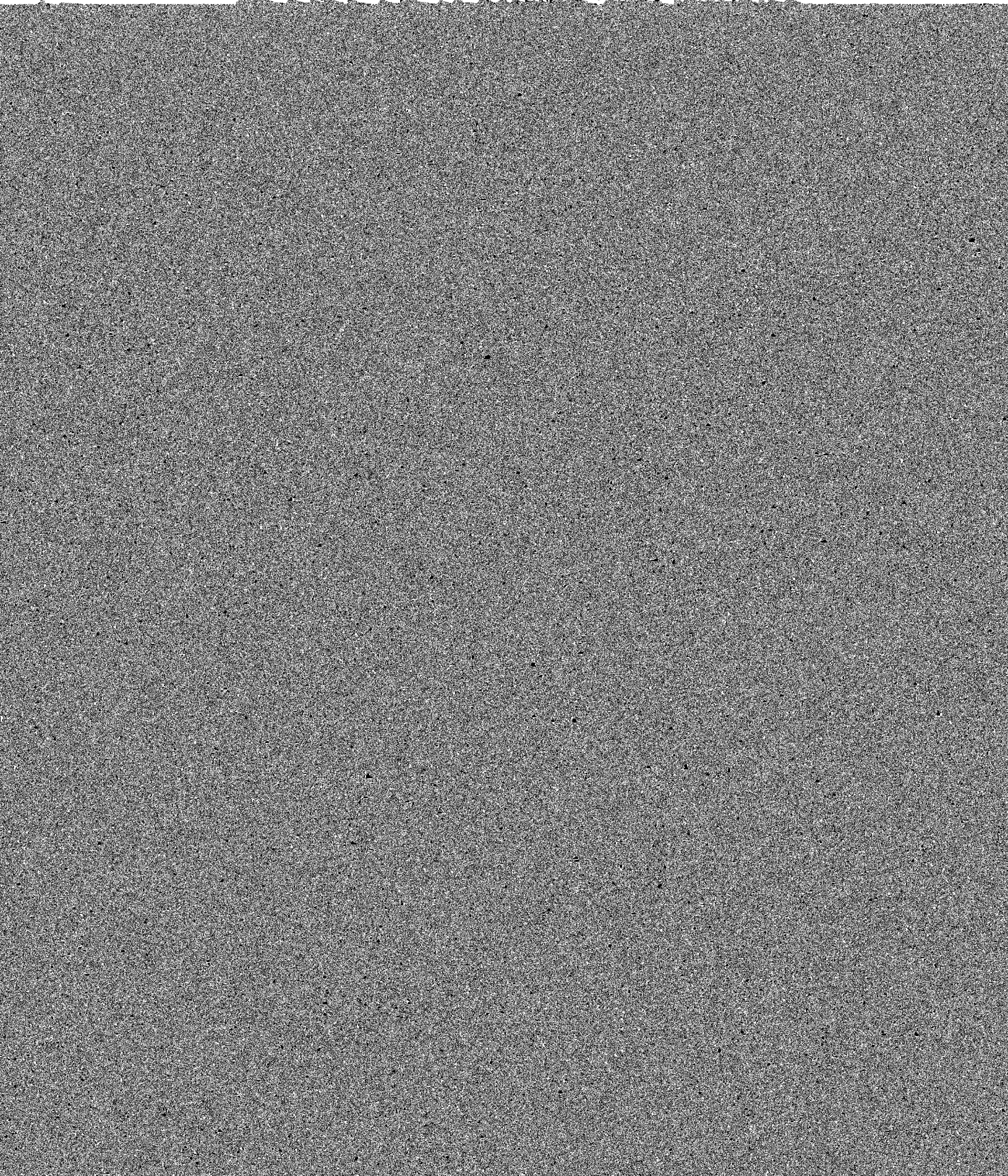
DELIVERABLES:

Vendor will continue to provide maintenance which consists of program corrections and enhancements that Vendor may develop during the term of this agreement. Vendor will also provide support on the licensed



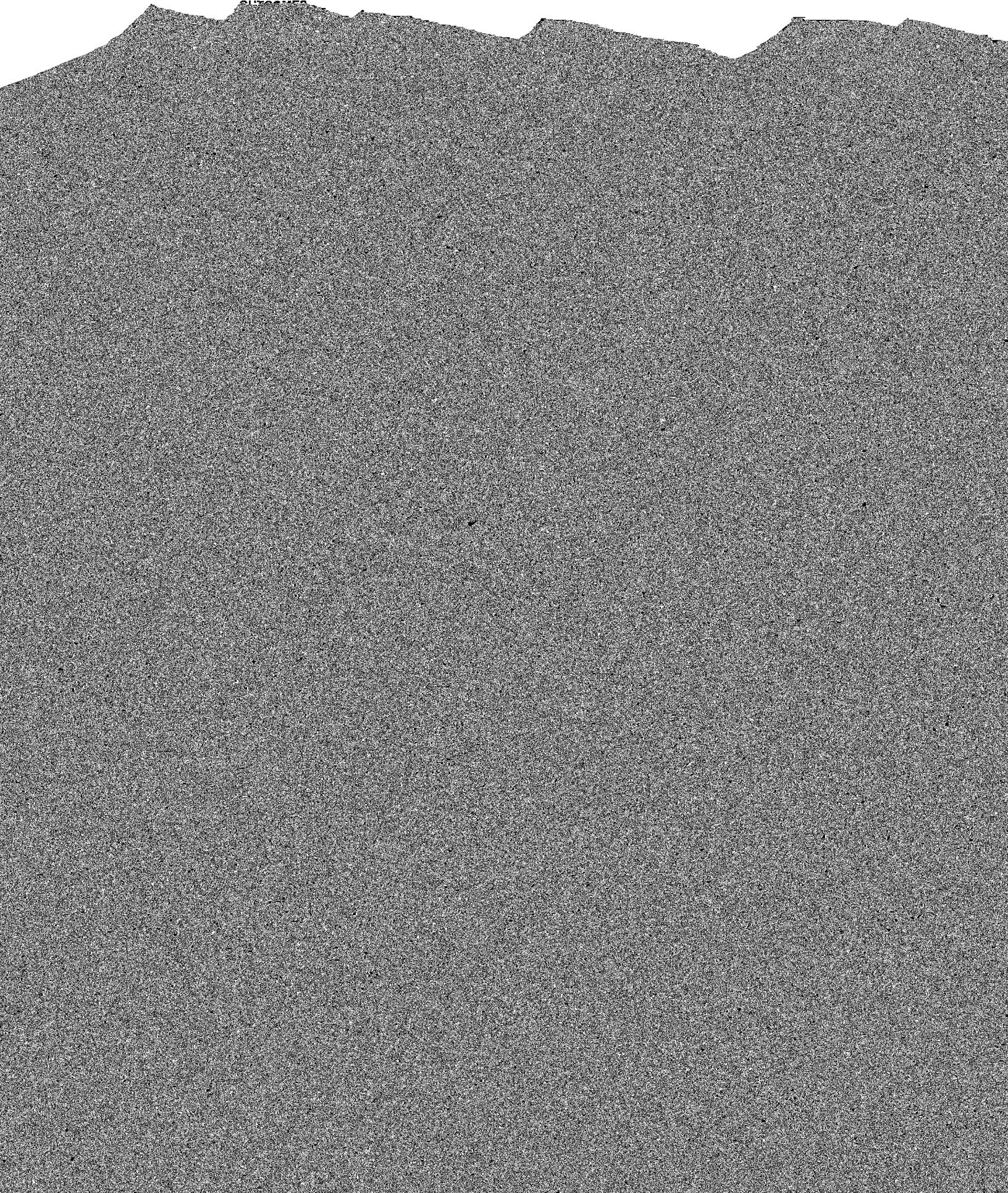
July 22, 2015

OUTCOMES:



July 22, 2015

ATTACHED



July 22, 2015

USER INFORMATION :

Project

July 22, 2015

Etihcs - The Board's Etihcs Code adopted May 25, 2011 (11-0525-P02), as amended from time to time

July 22, 2015

FINANCIAL: The salaries of these individuals will be established in accordance with the provisions of the Administrative Compensation Plan.

