

November 19, 2014

**RESOLUTION AUTHORIZING RECIPROCAL EXCHANGES OF REVERSIONARY INTERESTS  
WITH THE CHICAGO PARK DISTRICT FOR THE EXPANSION OF THE NEW  
SOUTHEAST AREA ELEMENTARY SCHOOL SITE**

and politic, organized and existing under and by virtue of the provisions of the School Code, 105 ILCS 5/34-1 et. seq. as amended; and

**WHEREAS**, the Board exercises general supervision and jurisdiction over the establishment and maintenance of public schools and other educational facilities of the Board including playgrounds and other recreational facilities; and

**WHEREAS**, the Chicago Park District is a body politic and corporate created pursuant to 70 ILCS 1505/1 et. seq. as amended; and

**WHEREAS**, on June 25, 2014, the Board adopted Resolution No.14-0625-RS2 requesting the Public Building Commission (the "PBC") construct a new Southeast Area Elementary School at 104<sup>th</sup>

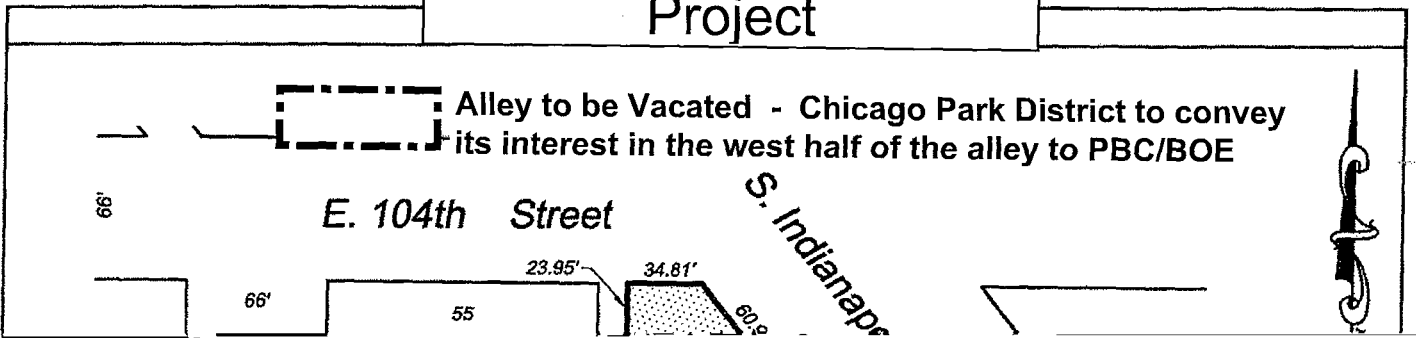
1. The preambles of this Resolution are incorporated into this section as if fully set forth herein.
2. On behalf of the Board, the PBC is hereby authorized to acquire title and possession of the entire Alley described on Exhibit A for the construction of the new Southeast Area Elementary School.
3. In consideration of the Park District's conveyance of its reversionary interests in the Alley, the Board authorizes the City of Chicago in Trust for Use of Schools to vacate and transfer title of South Loomis Street between Monroe and Adams Streets to the Chicago Park District for a pedestrian walkway between Skinner Park and Whitney Young's Athletic Fields.
4. The Chief Administrative Officer, with the review and approval of the General Counsel, is authorized and directed to negotiate and execute agreements with the Chicago Park District and the City of Chicago for the exchange of Park District's reversionary interests in the Alley

adjacent to the new Southeast Area Elementary School Site for the Board's reversionary interest in South Loomis Street adjacent to Skinner Park.

5. The General Counsel and the PBC on behalf of the Board, are authorized to attach legal descriptions and surveys and to include such terms and conditions in the exchange

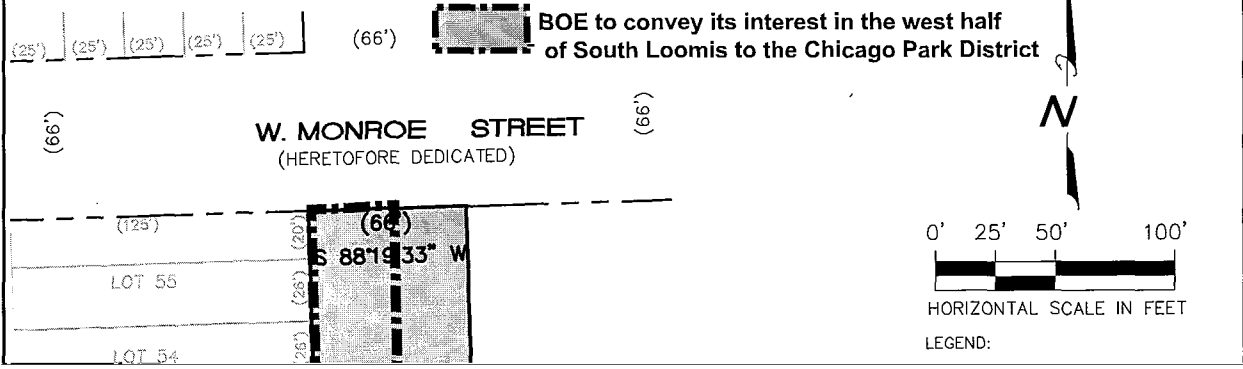
# Exhibit 1

## Southeast Area School Project



# Exhibit 2

## PLAT OF VACATION



(25') (25') (25') (25') (25')

(66')



BOE to convey its interest in the west half of South Loomis to the Chicago Park District

(66')

W. MONROE STREET  
(HERETOFORE DEDICATED)

(66')

N

(125')

LOT 55

LOT 54

(66')

S 88°19'33" W

0' 25' 50' 100'

HORIZONTAL SCALE IN FEET

LEGEND: